

# TM-C3400 Setup Guide

EPSON  
EXCEED YOUR VISION



\*412401301\*

## Safety Precautions

TM-C3400 User's Manual presents important information intended to ensure safe and effective use of this product. Please read it carefully in advance. TM-C3400 User's Manual is included on the TM-C3400 Setup and Utilities CD.

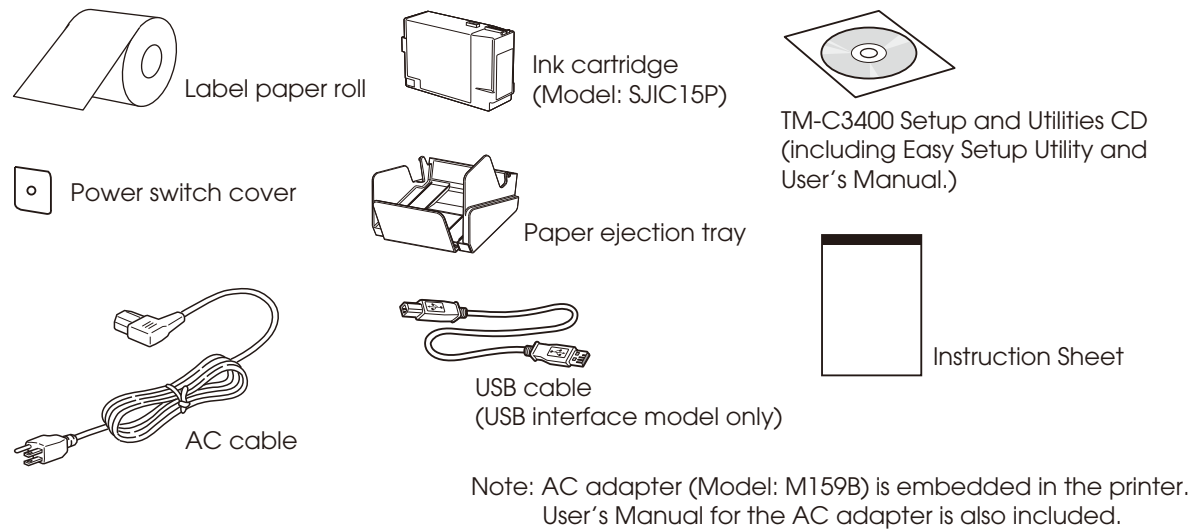
## Operating Environment

OS	Microsoft Windows 7 SP1 (32/64 bit) Microsoft Windows Vista SP2 (32/64 bit) Microsoft Windows XP SP2 (64 bit), SP3 (32 bit) Microsoft Windows Server 2008 R2 SP1 Microsoft Windows Server 2008 SP2 (32/64 bit) Microsoft Windows Server 2003 R2 SP2 (32/64 bit)	CPU	1 GHz or better is recommended. Intel/Pentium/Celeron series, AMD Athlon/Duron family, or processors that are compatible with these are recommended.
Computers	PC/AT-compatible computers that run the above operating system.	RAM	512 MB or larger is recommended.
		HDD	250 MB or larger

Note: Microsoft .NET Framework 3.5 SP1 is required to use Easy Setup Utility.

## 1 Unpacking

If any items are damaged, contact your dealer.

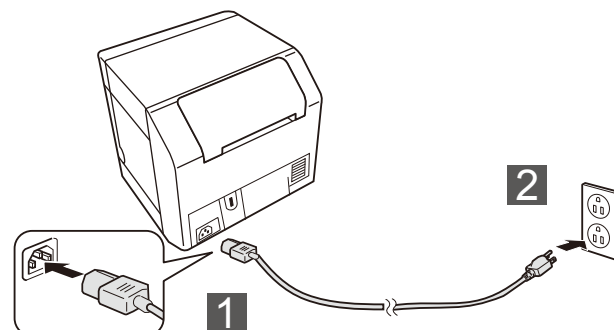


## 2 Connecting the AC Cable

### WARNING:

Always use the Epson Model M159B as the AC adapter. Using any other AC adapter can result in electric shock and fire.

Should a fault ever occur in the AC adapter, immediately turn off the power to the printer and remove the AC cable from the wall socket.

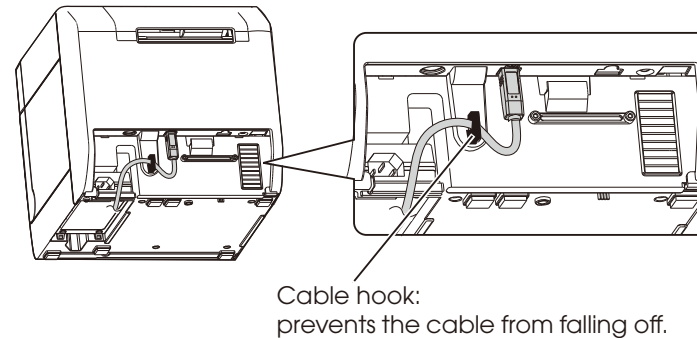


## 3 Connecting to the Computer

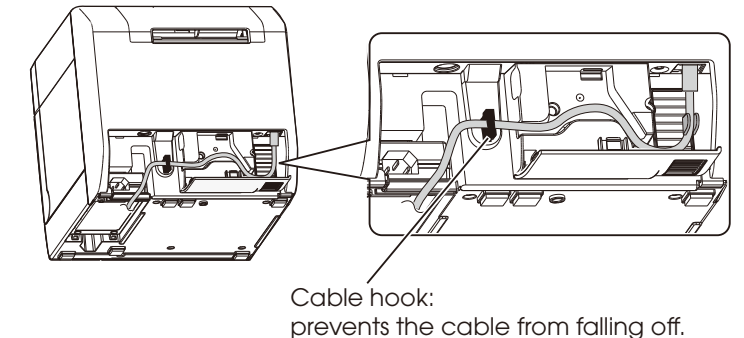
### For USB Interface Model

#### CAUTION:

Do not turn on the printer before installing the printer driver.



### For Ethernet Interface Model



## 4 Installing Easy Setup Utility and Printer Driver

#### CAUTION:

Be sure to confirm the operating environment before installing.  
You are required to login as a user with administrative rights.

### For USB Interface Model

- 1 Make sure that the printer is turned off.
- 2 Load TM-C3400 Setup and Utilities on your computer.
- 3 Click **TM-C3400EasySetup**.
- 4 Click on your desktop.
- 5 Click [**Install Driver**], and then click [**Local**].



If the screen confirming the connection to the computer is displayed during the installation, turn on the printer.

### For Ethernet Interface Model

- 1 Turn on the printer.
- 2 Load TM-C3400 Setup and Utilities on your computer.
- 3 Click **TM-C3400EasySetup**.
- 4 Click on your desktop.
- 5 Click [**Install Driver**], and then click [**Network**].



Network settings are also processed during the installation.

## 5 Printer Settings

### CAUTION:

When you use fanfold paper, first set up the printer using the INCLUDED roll paper. After you have completed ink charging, replace it with fanfold paper. (See TM-C3400 User's Manual for details on how to replace paper.)

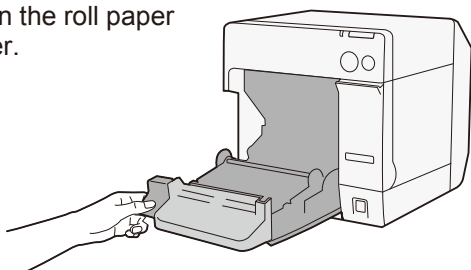


Click **[Setup Wizard]**.

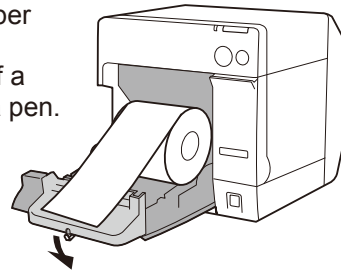
Complete the printer settings by following the instructions displayed.

## 6 Installing Paper

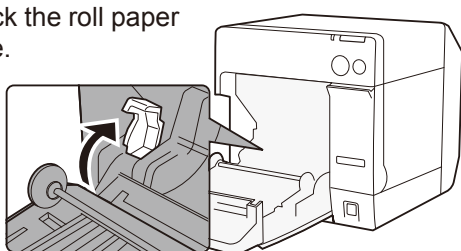
- 1 Open the roll paper cover.



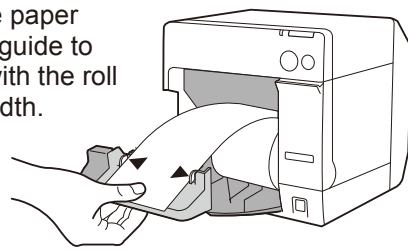
- 5 Unlock the paper ejection guide, using the tip of a tool, such as a pen.



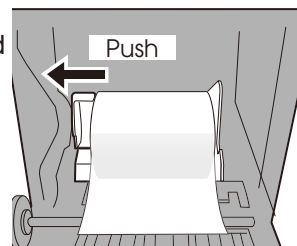
- 2 Unlock the roll paper guide.



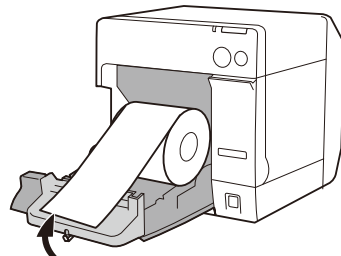
- 6 Slide the paper ejection guide to align it with the roll paper width.



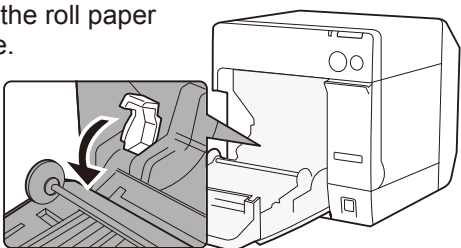
- 3 Push the roll paper guide on the left, and load the roll paper with the printable side up completely inside the printer.



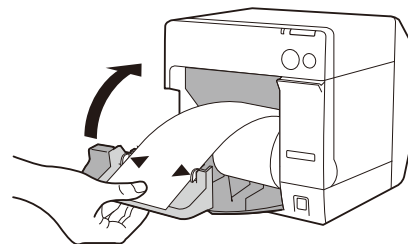
- 7 Lock the paper ejection guide.



- 4 Lock the roll paper guide.



- 8 Close the roll paper cover.



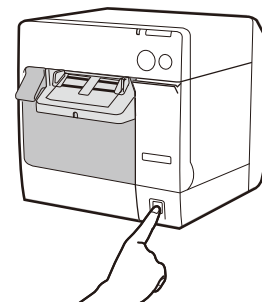
## 7 Installing the Ink Cartridge

### CAUTION:

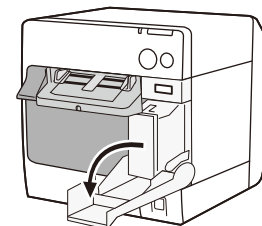
Be sure to install the roll paper before installing the ink cartridge. Do not open the ink cartridge package until you are ready to install it in the printer.

When you install continuous paper, about 40 inches of paper is fed and the printer enters the error state right after the printer is turned on. In that case, turn off the printer, and then turn it back on.

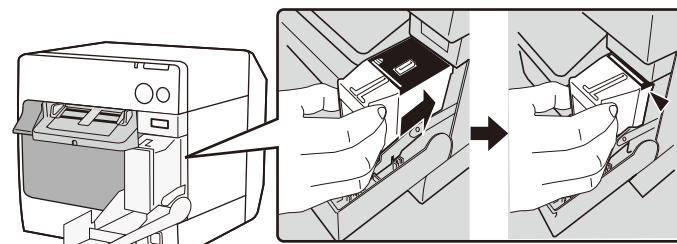
- 1 Turn on the printer.



- 2 Open the ink cartridge cover.



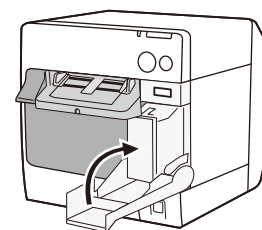
- 3 Push the ink cartridge gently into the cartridge holder.



- 4 Close the ink cartridge cover.

### CAUTION:

Do not turn off the printer or open the roll paper cover or the ink cartridge cover during ink charging.



The Power LED flashes during ink charging. When ink charging finishes, the Power LED stays on.

All rights reserved. No part of this publication may be reproduced, stored in a retrieval system, or transmitted in any form or by any means, electronic, mechanical, photocopying, recording, or otherwise, without the prior written permission of Seiko Epson Corporation. No patent liability is assumed with respect to the use of the information contained herein. While every precaution has been taken in the preparation of this book, Seiko Epson Corporation assumes no responsibility for errors or omissions. Neither is any liability assumed for damages resulting from the use of the information contained herein. Neither Seiko Epson Corporation nor its affiliates shall be liable to the purchaser of this product or third parties for damages, losses, costs, or expenses incurred by purchaser or third parties as a result of: accident, misuse, or abuse of this product or unauthorized modifications, repairs, or alterations to this product, or (excluding the U.S.) failure to strictly comply with Seiko Epson Corporation's operating and maintenance instructions.

Seiko Epson Corporation shall not be liable against any damages or problems arising from the use of any options or any consumable products other than those designated as Original Epson Products or Epson Approved Products by Seiko Epson Corporation.

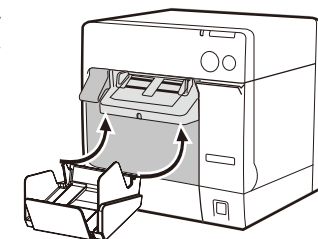
## 8 Attaching/Adjusting the Paper Ejection Tray

When you attach the paper ejection tray, you can temporarily store the printed paper in the tray.

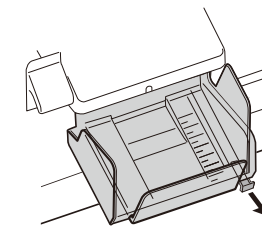
### CAUTION:

Paper may not stay in the paper ejection tray, depending on the paper curl and length.

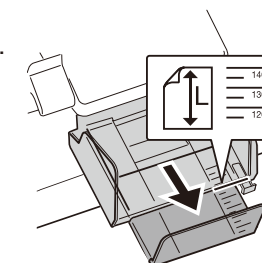
- 1 Attach the paper ejection tray to the hooks under the paper ejection table.



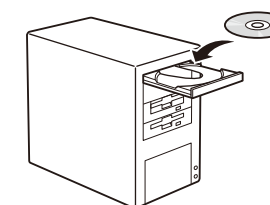
- 2 Pull the lever at the bottom-right of the paper ejection tray to unlock it.



- 3 Slide the bottom tray to align it with the paper length, and lock it.



## For More Information



TM-C3400 User's Manual is included on the TM-C3400 Setup and Utilities CD.

EPSON is a registered trademark of Seiko Epson Corporation in Japan and other countries/regions. Microsoft, Windows, and Windows Vista are registered trademarks of Microsoft Corporation. The Ethernet interface model of this product includes software developed by the University of California, Berkeley, and its contributors.

NOTICE: The contents of this manual are subject to change without notice.

Copyright © 2012 Seiko Epson Corporation.