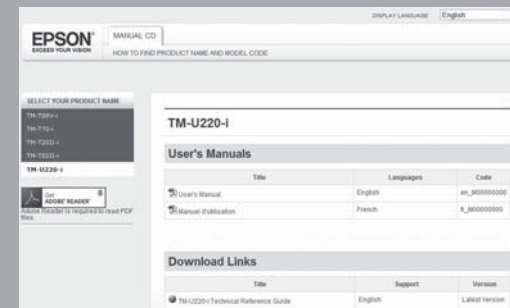
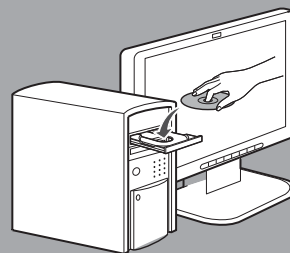


EN	<b>Start Here</b>	For information on safety recommendations and basic operations, see <i>User's Manual</i> included on <i>Manual CD</i> . For detailed information, see <i>Technical Reference Guide</i> . You can access <i>Technical Reference Guide</i> from the included <i>Manual CD</i> .
FR	<b>Commencer Ici</b>	Pour obtenir des informations sur les recommandations concernant la sécurité et le fonctionnement de base, voir le manuel d'utilisation inclus dans le <i>Manual CD</i> . Pour obtenir des informations détaillées, voir le <i>Technical Reference Guide</i> . Vous pouvez accéder au <i>Technical Reference Guide</i> à partir du <i>Manual CD</i> .



## Standards and Approvals

The following standards are applied only to the products that are so labeled. (EMC is tested using the Epson power supplies.)

North America: FCC Class A, CAN ICES-3 (A)/NMB-3 (A)

### WARNING

The connection of a non-shielded interface cable to this device will invalidate the EMC standards of this device. You are cautioned that changes or modifications not expressly approved by Seiko Epson Corporation could void your authority to operate the equipment.

### FCC Compliance Statement for American Users

This equipment has been tested and found to comply with the limits for a Class A digital device, pursuant to Part 15 of the FCC Rules. These limits are designed to provide reasonable protection against harmful interference when the equipment is operated in a commercial environment.

This equipment generates, uses, and can radiate radio frequency energy and, if not installed and used in accordance with the instruction manual, may cause harmful interference to radio communications. Operation of this equipment in a residential area is likely to cause harmful interference, in which case the user will be required to correct the interference at his own expense.

### For California Customers Only

The lithium batteries in this product contain Perchlorate Material - special handling may apply.

See [www.dtsc.ca.gov/hazardouswaste/perchlorate](http://www.dtsc.ca.gov/hazardouswaste/perchlorate).

