

TM-i Series

Easy Setup Guide

Overview

Describes an overview of easy setup.

Preparing the setting file

Describes how to prepare a setting file to save to a USB memory stick.

Easy Setup for the TM-i

Describes how to copy EPSON TMNet WebConfig settings using TM-i easy setup.

Cautions

- No part of this document may be reproduced, stored in a retrieval system, or transmitted in any form or by any means, electronic, mechanical, photocopying, recording, or otherwise, without the prior written permission of Seiko Epson Corporation.
- The contents of this document are subject to change without notice. Please contact us for the latest information.
- While every precaution has been taken in the preparation of this document, Seiko Epson Corporation assumes no responsibility for errors or omissions.
- Neither is any liability assumed for damages resulting from the use of the information contained herein.
- Neither Seiko Epson Corporation nor its affiliates shall be liable to the purchaser of this product or third parties for damages, losses, costs, or expenses incurred by the purchaser or third parties as a result of: accident, misuse, or abuse of this product or unauthorized modifications, repairs, or alterations to this product, or (excluding the U.S.) failure to strictly comply with Seiko Epson Corporation's operating and maintenance instructions.
- Seiko Epson Corporation shall not be liable against any damages or problems arising from the use of any options or any consumable products other than those designated as Original Epson Products or Epson Approved Products by Seiko Epson Corporation.

Trademarks

Microsoft®, Windows® and Excel® are either registered trademarks or trademarks of Microsoft Corporation in the United States and other countries.

All other trademarks are the property of their respective owners and used for identification purpose only.

© Seiko Epson Corporation 2013–2023

For Safety

Key to Symbols

The symbols in this manual are identified by their level of importance, as defined below. Read the following carefully before handling the product.

CAUTION

Provides information that must be observed to avoid damage to your equipment or a malfunction.

NOTE

Provides important information and useful tips.

Restriction of Use

When this product is used for applications requiring high reliability/safety, such as transportation devices related to aviation, rail, marine, automotive, etc.; disaster prevention devices; various safety devices, etc.; or functional/precision devices, etc., you should use this product only after giving consideration to including fail-safes and redundancies into your design to maintain safety and total system reliability. Because this product was not intended for use in applications requiring extremely high reliability/safety, such as aerospace equipment, main communication equipment, nuclear power control equipment, or medical equipment related to direct medical care, etc., please make your own judgment on this product's suitability after a full evaluation.

About this Manual

Aim of the Manual

This manual presents information that is necessary for using the TM-i series Easy Setup.

The TM-i series in this manual is a generic term for the following printers.

- TM-L90-i
- TM-T20II-i
- TM-T70-i
- TM-T82II-i
- TM-T83II-i
- TM-T88V-i
- TM-U220-i
- TM-U220IIB-i

Manual Content

The manual is made up of the following sections:

Chapter 1	Overview
Chapter 2	Preparing the setting file
Chapter 3	Easy Setup for the TM-i

Contents

■ For Safety	3
Key to Symbols	3
■ Restriction of Use	3
■ About this Manual	4
Aim of the Manual	4
Manual Content	4
■ Contents	5

Overview 6

■ What is Easy Setup?	6
Preparation	7
Setting	7
■ Environment	8
TM-i Series	8
USB memory	8
TM Printer	8
■ Contents in the Package	9
Download	9

Preparing the setting file 10

■ Setting files to save to USB memory	10
Setting.ini file and TM-i Firmware compatibility	10
■ Editing the setting.ini file	11
■ Using EasyKittingUtility.xls	41
Operating environment	41
Usage	42
■ Saving web content	45

Easy Setup for the TM-i 46

■ Flow of the Easy Setup	46
■ Connecting the TM printer	47
■ Connecting a USB memory stick, automatic settings	47
■ Checking the printing result	48
Troubleshooting	50

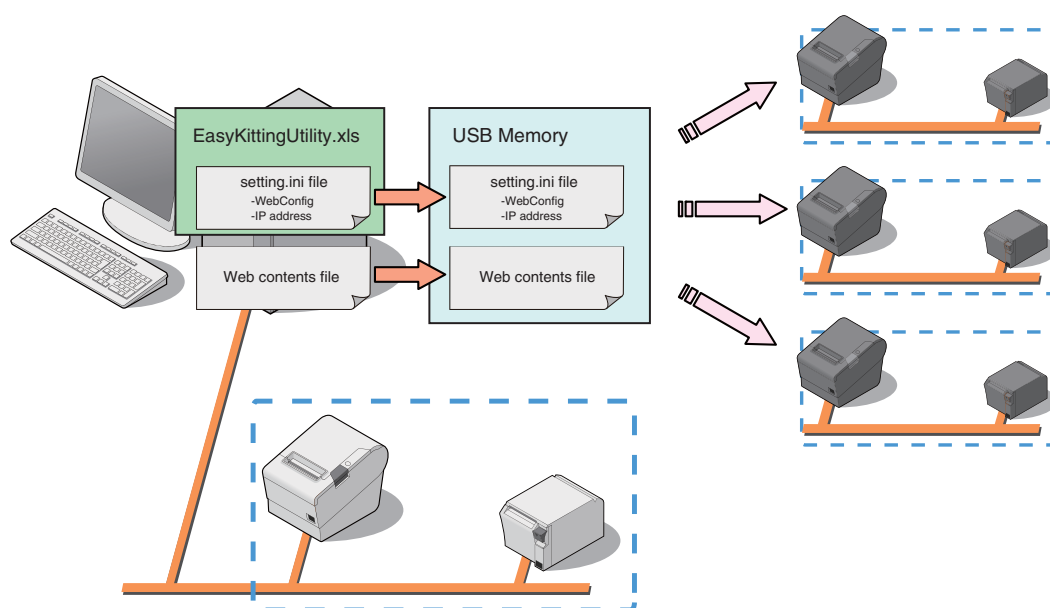
Overview

This section explains the outline for the Easy Setup.

What is Easy Setup?

Easy setup is a function that allows you to set the EPSON TMNet WebConfig by simply inserting a USB memory stick and turning on the power. The USB memory stick should contain a file (setting.ini) with the setting values for EPSON TMNet WebConfig and a file with web content.

When a TM printer connected from TM-i via the network is used, it is also possible to configure the network settings such as the IP address for the TM printer at the same time.



CAUTION

The settings for DIP switches and memory switches in TM-i and TM printers cannot be copied.

Preparation

- 1** Use the EasyKitUtility.xls file included with this manual or a text editor to create a setting.ini file.
- 2** If the USB memory stick contains a setting.ini file and web content is registered in TM-i, copy the same web content.

Setting

Perform the following when setting up a product.

- 1** Use an USB cable to connect a wireless LAN TM printer to TM-i.
Refer to the Technical Reference Guide for the wireless LAN interface in use for details about the types of USB cable that can be used.
If you are using a wired LAN printer, connect it to a network. Configure the TM printer to its default network settings.
- 2** Insert the USB memory stick into TM-i, and turn on the power.
- 3** TM-i and the TM printer settings are performed automatically, and the results are printed.

Environment

TM-i Series

TM-i	TM-i firmware version				
	3.x or earlier	4.0	4.1	4.3 to 4.44	4.46 or later
TM-L90-i	●	-	-	-	-
TM-T20II-i	-	●	●	●	-
TM-T70-i	●	●	●	●	●
TM-T82II-i	-	●	●	●	-
TM-T83II-i *	-	●	●	●	-
TM-T88V-i	●	●	●	●	●
TM-U220-i	-	-	●	●	●
TM-U220IIB-i	-	-	-	-	●

*: For Korea model only.

USB memory

- USB 1.1 or later
- 256 MB or more

The necessary space varies based on the size of the Web contents file.

TM Printer

Available TM printers are different depending on the TM-i Firmware version installed in the product.

For detail, refer to the Technical Reference Guide of each TM printer.

Contents in the Package

Manual

- TM-i Series Easy Setup Guide (This Document)
- TM-L90-i Technical Reference Guide
- TM-T20II-i Technical Reference Guide
- TM-T70-i Technical Reference Guide
- TM-T82II-i Technical Reference Guide
- TM-T83II-i Technical Reference Guide
- TM-T88V-i Technical Reference Guide
- TM-U220-i Technical Reference Guide
- TM-U220IIB-i Technical Reference Guide

Utility

File name	Description
EasyKittingUtility_E_Verx.xx.zip	Contains EasySetup sample program.
EasyKittingUtility.xls	Utility that can create the setting.ini file.
setting.ini	The setting.ini file that can be edited.
readme.txt	Readme file.

Download

For customers in North America, go to the following web site:

<https://www.epson.com/support/>

For customers in other countries, go to the following web site:

<https://epson.sn>

Preparing the setting file

This section explains the method for creating the setting files to save on the USB memory.

Setting files to save to USB memory

Save the following setting files on the USB memory in order to perform Easy Setup for the TM-i.

File	Description
setting.ini	You must edit the contents of the setting.ini file to match the settings. Refer to "Editing the setting.ini file" on page 11 .
Web contents file	This file includes followings. <ul style="list-style-type: none"> • Web content file • Server authentication file • PHP content file • SSL certificate file

Setting.ini file and TM-i Firmware compatibility

Create the setting file (setting.ini) for each TM-i Firmware version. The table below shows compatibility between the setting file and TM-i Firmware of the TM-i.

		TM-i Firmware Version of TM printer			
		3.x or earlier	4.0	4.1	4.3 or later
Supported Firmware Version of setting.ini File	3.x or earlier	●	-	-	-
	4.0	-	●	-	-
	4.1	-	▲	●	▲
	4.3 or later	-	▲	▲	●

-: Not supported, ▲: Supported, but some items cannot be set, ●:Supported

Editing the setting.ini file

Edit the setting.ini file to match the settings in use. An example of editing the setting.ini file is provided below.

CAUTION

- The setting.ini file included in this package supports TM-i Firmware Ver.4.1. For other versions, the items must be edited.
- Although it might not be necessary to set a particular item, do not delete that item.
- Refer to general ini files for details about the format of character strings in the setting.ini file.

[WiredLinkLayer]

LinkSpeed="AutoNegotiation"

Wired LAN settings

[WiredNetwork]

IPAddressSettingMethod="Manual"

APIPA="Disable"

IPAddress="192.168.192.168"

SubnetMask="255.255.255.0"

Gateway=""

DNSServerSettingMethod=""

DNSServerIPAddress1=""

DNSServerIPAddress2=""

DNSServerIPAddress3=""

[WirelessLinkLayer]

NetworkMode="Infrastructure"

SSID="EpsonNet"

AdhocChannel="1"

CommunicationStandard="802.11b/g"

AuthenticationMethod="OpenSystem"

EncryptionMethod="None"

DefaultWEPKey=""

WEPKey1=""

WEPKey2=""

WEPKey3=""

WEPKey4=""

PresharedKey="EpsonNet"

Wireless LAN settings

[WirelessNetwork]

IPAddressSettingMethod="Manual"

APIPA="Disable"

IPAddress="192.168.192.168"

SubnetMask="255.255.255.0"

Gateway=""

DNSServerSettingMethod=""

DNSServerIPAddress1=""

DNSServerIPAddress2=""

DNSServerIPAddress3=""

<pre>[WebContents] AutoUpdate="Disable" Frequency="" Timing="" UpdateTimeHour="" UpdateTimeMinute="" ServerAuthentication="" FileURL="" UseProxy="Disable" ProxyURL="" ID="" Password=""</pre>	<p>Settings when registering Web contents</p> <p>(Description of this part is required for TM-i Firmware Ver.3.x or earlier.)</p>
<pre>[WebContentsStorage] PHP="Disable" WebContentsStorage="Printer"</pre>	Settings when using the PHP
<pre>[ServerDirectPrint] Use="Disable" ID="" Password="" ServerAuthentication="" URL="" Interval="5" URL2="" Interval2="5" URL3="" Interval3="5"</pre>	Settings when using the Server Direct Print
<pre>[StatusNotification] Use="Disable" ID="" Password="" ServerAuthentication="" URL="" Interval="5"</pre>	Settings when using the Status notification function
<pre>[General] Administrator="Tom" Location="Counter001"</pre>	Administrator information settings
<pre>[Time] Year="" Month="" Day="" Hour="" Minute="" TimeZone="0" UseTimeServer="Disable" TimeServerSettingMethod="Manual" TimeServer=""</pre>	Settings when using TimeServer

<pre>[Password] Password="epson" NewPassword=""</pre>	Settings for password of EPSON TMNet WebConfig of TM-i
<pre>[EasyKitting] Once="False" UseEncodeURL="Disable"</pre>	Easy Setup settings
<pre>[Printer-1] DeviceID="local_printer" Model="TM-T88V-i" IPAddress="" RetryInterval="100" [Printer-2] DeviceID="TM-88V" Model="TM-T88V" IPAddress="192.168.3.121" RetryInterval="100" [Printer-3] DeviceID="TM-T88IV" Model="TM-T88IV" IPAddress="192.168.3.122" RetryInterval="100"</pre>	Registration of printers that can be controlled by TM-i
<pre>[CustomerDisplay] Use="Enable" Baudrate="9600" Databit="8" Parity="None" Brightness="100" [KeyInputDevice-1] DeviceID="KeyInputDevice" DeviceName="HandyScanner" VID="165A" PID="B001" ControlScript="Scanner_Generic.js" [KeyInputDevice-2] DeviceID="KeyInputDevice2" DeviceName="MyKeyboard" VID="0566" PID="3029" ControlScript="Keyboard_Generic.js"</pre>	Settings for devices that are controlled via connection to TM-i

<pre>[SerialCommunicationDevice] Use="Enable" Baudrate="9600" Databit="8" Parity="None" Stopbit="1" FlowControl="None"</pre>	Settings for devices that are controlled via connection to TM-i
<pre>[Proxy] ProxyURL="" ID="" Password="" UseProxyServerDirectPrint="Disable" UseProxyStatusNotification="Disable" UseProxyWebContentsUpdate="Disable" UseProxyDeviceDataNotification="Disable"</pre>	Proxy settings
<pre>[DeviceDataNotification] Use="Disable" ID="" Password="" ServerAuthentication="Disable" URL="" BoxID="" PrintError="Disable" ErrorMessage="" Bold="Disable" Underline="Disable" DoubleWidth="Disable" DoubleHeight="Disable" Reverse="Disable" UpsideDown="Disable" Cut="Enable"</pre>	Settings for Device Data Notification
<pre>[PrintSpooler] Use="Disable" RetryCount="1" RetryInterval="30"</pre>	Settings for Print Spooler
<pre>[PrintForwarding] Message="" Bold="Disable" Underline="Disable" DoubleWidth="Disable" DoubleHeight="Disable" Reverse="Disable" UpsideDown="Disable" Cut="Enable" Position="Top"</pre>	Settings for Notification message when Print Forwarding

[PrintForwarding-1] DeviceID="local_printer" Candidate1="TM-88V" Candidate2="TM-T88IV"	Settings for Print Forwarding
[DataNotificationDevice-1] DeviceID="local_printer" [DataNotificationDevice-2] DeviceID="TM-88V" [DataNotificationDevice-3] DeviceID="TM-T88IV"	Settings for device used for Device Data Notification
[SSL] Use="Enable" CreateSelfSignedCert="Enable"	Settings for SSL

The setting.ini file is written as follows. Edit the contents to match your settings.

Section name	Key	Description	TM-i Firmware Version			
		Valid value	Ver. 3 or earlier	Ver. 4.0	Ver. 4.1	Ver. 4.3 or later
WiredLinkLayer		Settings for Wired LAN. • This section is a required item.				
	LinkSpeed	Designates the link speed for wired LAN. Normally AutoNegotiation is specified.				
		"10BaseTHalf"/"10BaseTFull"/ "100BaseTHalf"/"100BaseTFull"/ "AutoNegotiation"	●	●	●	●
WiredNetwork		Network settings for Wired LAN. • This section is a required item.				
	IPAddressSetting Method	Designates the method for setting the IP address.	●	●	●	●
		"Auto" / "Manual"				
	APIA	Designates the method for setting the IP address.	●	●	●	●
"Enable" / "Disable"						

Section name	Key	Description	TM-i Firmware Version			
		Valid value	Ver. 3 or earlier	Ver. 4.0	Ver. 4.1	Ver. 4.3 or later
	IPAddress	Designates the IP address. <ul style="list-style-type: none"> This must be set if "IPAddressSettingMethod" = "Manual". This is ignored if "IPAddressSettingMethod" = "Auto". 				
		<ul style="list-style-type: none"> Format of (numerical value 1 to 255).(numerical value 0 to 255).(numerical value 0 to 255).(numerical value 0 to 254) The following address(es) cannot be used. 127.0.0.1 224.0.0.0 to 239.255.255.255 240.0.0.0 to 255.255.255.255 	●	●	●	●
	SubnetMask	Designates the subnet mask. <ul style="list-style-type: none"> This must be set if "IPAddressSettingMethod" = "Manual". This is ignored if "IPAddressSettingMethod" = "Auto". 				
		<ul style="list-style-type: none"> Format of (numerical value 1 to 255).(numerical value 0 to 255).(numerical value 0 to 255).(numerical value 0 to 254) The following address(es) cannot be used. 0.0.0.0 127.0.0.1 255.255.255.255 255.0.255.0 	●	●	●	●
	Gateway	Designates the default gateway. <ul style="list-style-type: none"> This is ignored if "IPAddressSettingMethod" = "Auto". 				
		<ul style="list-style-type: none"> Format of (numerical value 1 to 255).(numerical value 0 to 255).(numerical value 0 to 255).(numerical value 0 to 254) The following address cannot be used. 127.0.0.1 	●	●	●	●

Section name	Key	Description	TM-i Firmware Version			
		Valid value	Ver. 3 or earlier	Ver. 4.0	Ver. 4.1	Ver. 4.3 or later
	DNSServerSettingMethod	Designates the method for setting the DNS server address. <ul style="list-style-type: none"> If "IPAddressSettingMethod" = "Auto", designate "Auto" or "Manual". If "IPAddressSettingMethod" = "Manual", designate "Manual". 	●	●	●	●
		"Auto" / "Manual"				
	DNSServerAddress1 DNSServerAddress2 DNSServerAddress3	Designates the IP addresses for the DNS servers. "1~3" indicates the order of use for the DNS servers. They are used in ascending order, starting with 1. <ul style="list-style-type: none"> If "DNSServerSettingMethod" = "Manual", "DNSServerAddress1~3" must be designated. This is ignored if "DNSServerSettingMethod" = "Auto". 	●	●	●	●
		<ul style="list-style-type: none"> Format of (numerical value 1 to 255).(numerical value 0 to 255).(numerical value 0 to 255).(numerical value 0 to 254) The following address(es) cannot be used. 127.0.0.1 224.0.0.0 to 239.255.255.255 240.0.0.0 to 255.255.255.255 If nothing is entered, "0" can be used. 				
WirelessLinkLayer		Settings for Wireless LAN. <ul style="list-style-type: none"> This section is a required item. 				
	NetworkMode	Designates the operation mode for wireless LAN. "Adhoc" / "Infrastructure"	●	●	●	●
	SSID	Designates the SSID. Between 1 and 32 alphanumeric characters and symbols and spaces	●	●	●	●
	AdhocChannel	Designates the adhoc channel used when NetworkMode = "Adhoc". <ul style="list-style-type: none"> If "NetworkMode" = "Infrastructure", designates "1". 	●	●	●	●
		"1" to "11"				

Section name	Key	Description	TM-i Firmware Version			
		Valid value	Ver. 3 or earlier	Ver. 4.0	Ver. 4.1	Ver. 4.3 or later
	CommunicationStandard	Designates a communication standard for wireless LAN.	●	●	●	●
		"802.11b/g" / "802.11b/g/n"				
	Authentication Method	Designates the authentication method. • If "NetworkMode" = "Adhoc", designate "OpenSystem" or "SharedKey". • If "NetworkMode" = "Infrastructure", designate "OpenSystem", "SharedKey", "WPAPSK", or "WPA2PSK".	●	●	●	●
		"OpenSystem" / "SharedKey" / "WPAPSK" / "WPA2PSK"				
	EncryptionMethod	Designates the encryption method. • If "Authentication Method" = "OpenSystem", designate "None" or "WEP". • If "Authentication Method" = "SharedKey", designate "WEP". • If "Authentication Method" = "WPAPSK", designate "TKIP" or "AES". • If "Authentication Method" = "WPA2PSK", designate "AES".	●	●	●	●
		"None" / "WEP" / "TKIP" / "AES"				
	DefaultWEPKey	Designates the WEP key in use (1 to 4).	●	●	●	●
		"WEPKey1" / "WEPKey2" / "WEPKey3" / "WEPKey4"				
	WEPKey1 WEPKey2 WEPKey3 WEPKey4	Designates the WEP key that corresponds to the WEP key number. • For the pass phrase, use 5 or 13 alphanumeric characters and symbols or spaces. • For hexadecimal, use either 10 or 26 alphanumeric characters (0 to 9, a to f, A to F).	●	●	●	●
	PresharedKey	Designates the pre-shared key used when using WPAPSK or WPA2PSK.				
		• For the pass phrase, use between 8 and 63 alphanumeric characters and symbols or spaces. • For hexadecimal, use 64 alphanumeric characters (0 to 9, a to f, A to F).	●	●	●	●

Section name	Key	Description	TM-i Firmware Version			
		Valid value	Ver. 3 or earlier	Ver. 4.0	Ver. 4.1	Ver. 4.3 or later
WirelessNetwork		Network settings for Wireless LAN. • This section is a required item.				
	IPAddressSetting Method	Designates the method for setting the IP address.	●	●	●	●
		"Auto" / "Manual"				
	APIPA	Designates whether to enable / disable the APIPA.	●	●	●	●
		"Enable" / "Disable"				
	IPAddress	Designates the IP address. • This must be set if "IPAddressSetting-Method" = "Manual". • This is ignored if "IPAddressSetting-Method" = "Auto".				
		• Format of (numerical value 1 to 255).(numerical value 0 to 255).(numerical value 0 to 255).(numerical value 0 to 254) • The following address(es) cannot be used. 127.0.0.1 224.0.0.0 to 239.255.255.255 240.0.0.0 to 255.255.255.255	●	●	●	●
	SubnetMask	Designates the subnet mask. • This must be set if "IPAddressSetting-Method" = "Manual". • This is ignored if "IPAddressSetting-Method" = "Auto".				
		• Format of (numerical value 1 to 255).(numerical value 0 to 255).(numerical value 0 to 255).(numerical value 0 to 254) • The following address(es) cannot be used. 0.0.0.0 127.0.0.1 255.255.255.255 255.0.255.0	●	●	●	●

Section name	Key	Description	TM-i Firmware Version			
		Valid value	Ver. 3 or earlier	Ver. 4.0	Ver. 4.1	Ver. 4.3 or later
	Gateway	Designates the default gateway.	●	●	●	●
		<ul style="list-style-type: none"> This is ignored if "IPAddressSetting-Method" = "Auto". Format of (numerical value 0 to 255).(numerical value 0 to 255).(numerical value 0 to 255).(numerical value 0 to 254) The following address cannot be used. 127.0.0.1 				
	DNSServerSettingMethod	Designates the method for setting the DNS server address.	●	●	●	●
		"Auto" / "Manual"				
	DNSServerAddress1 DNSServerAddress2 DNSServerAddress3	Designates the IP addresses for the DNS servers. "1 to 3" indicates the order of use for the DNS servers. They are used in ascending order, starting with 1. <ul style="list-style-type: none"> If the "DNSServerSettingMethod" = "Manual", "DNSServerAddress1 to 3" must be designated. If "DNSServerSettingMethod" = "Auto", this is ignored. Format of (numerical value 1 to 255).(numerical value 0 to 255).(numerical value 0 to 255).(numerical value 0 to 254) The following address(es) cannot be used. 127.0.0.1 224.0.0.0 to 239.255.255.255 240.0.0.0 to 255.255.255.255 If nothing is entered, "0" can be used. 	●	●	●	●
WebContents		Settings for Web contents for registered to TM-i. <ul style="list-style-type: none"> This section is a required item, but some keys require no descriptions depending on the conditions. 				
	AutoUpdate	Designates whether to enable / disable automatic updates for Web contents.	●	●	●	●
		"Enable" / "Disable"				

Section name	Key	Description	TM-i Firmware Version			
		Valid value	Ver. 3 or earlier	Ver. 4.0	Ver. 4.1	Ver. 4.3 or later
	Frequency	Designates the frequency for automatic updates.	●	●	●	●
		"Hour" / "Daily" / "Weekly" / "Monthly"				
	Timing	Designates the timing for automatic updates.				
		<ul style="list-style-type: none"> This must be set if "Frequency" = "Hour", "Weekly", or "Monthly". This is ignored if "Frequency" = "Daily". 				
		<ul style="list-style-type: none"> If "Frequency" = "Hour", designate an Integer from 1 to 23. If "Frequency" = "Weekly", select "Sunday", "Monday", "Tuesday", "Wednesday", "Thursday", "Friday", or "Saturday". If "Frequency" = "Monthly", designate an integer from 1 to 31. 	●	●	●	●
	UpdateTime Hour	Designates the "hour" for the updates.				
		<ul style="list-style-type: none"> This must be set if "Frequency" = "Daily", "Weekly", or "Monthly". This is ignored if "Frequency" = "Hour". 	●	●	●	●
		Integer from 0 to 23				
	UpdateTimeMinute	Designates the "minute" for the updates.				
		<ul style="list-style-type: none"> This must be set if "Frequency" = "Daily", "Weekly", or "Monthly". This is ignored if "Frequency" = "Hour". 	●	●	●	●
		Integer from 0 to 59				
	ServerAuthentication	Use certificates imported into TM-i to enable/disable server authentication. If a key cannot be found, the current settings are retained.				
		<ul style="list-style-type: none"> Do not describe this item when not using server authentication with certificate. 	-	●	●	●
		"Enable" / "Disable"				
	FileURL	Designates the URL to obtain Web contents from.				
		Alphanumeric characters <ul style="list-style-type: none"> The protocol is in http or https format. The expansion is zip. 	●	●	●	●

Section name	Key	Description	TM-i Firmware Version			
		Valid value	Ver. 3 or earlier	Ver. 4.0	Ver. 4.1	Ver. 4.3 or later
	UseProxy	Designates whether to use a proxy server or not. <ul style="list-style-type: none"> Used only for TM-i Firmware Ver.3.x or earlier. For TM-i Firmware Ver.4.0 or later, describe "UseProxyWebContent-Update" in the "Proxy" section and do not describe this item. If "UseProxyWebContentsUpdate" in the "Proxy" section is specified, it is ignored. This is ignored if "FileURL" is not designated. 	●	-	-	-
		"Enable" / "Disable"				
	ProxyURL	Designates the URL of the proxy server. <ul style="list-style-type: none"> Used only for TM-i Firmware Ver.3.x or earlier. For TM-i Firmware Ver.4.0 or later, describe "ProxyURL" in the "Proxy" section and do not describe this item. If "ProxyURL" in the "Proxy" section is specified, it is ignored. If "UseProxy" = "Enable", this must be set. This is ignored if "FileURL" is not designated. 	●	-	-	-
		Within 255 alphanumeric characters. <ul style="list-style-type: none"> The protocol is in http or https format. 				
	ID	Designates ID for the server-side program to identify TM-i. This ID becomes the user ID used for Digest access authentication. The set value will also be passed as an ID parameter value for the form data posted to the server.	-	●	●	●
		Within 30 alphanumeric characters (Underscores, periods and hyphens can be used) Null characters can also be designated.				

Section name	Key	Description	TM-i Firmware Version			
		Valid value	Ver. 3 or earlier	Ver. 4.0	Ver. 4.1	Ver. 4.3 or later
	Password	The Digest access cannot be authenticated for user IDs without passwords. To authenticate the Digest access, configure a password that is not empty.	-	●	●	●
		Within 30 alphanumeric characters (Underscores, periods and hyphens can be used)				
		Null characters can also be designated.				
	AppliedLocalFile	Designates the file name of the Web content (zip file) file to be registered in TM-i. <ul style="list-style-type: none">This item is not a required item. If you are not using web content, delete this item.Designates the file in the same folder as this file (setting.ini).	●	●	●	●
		Valid file name with the "zip" extension (alphanumeric characters/ exclamation mark/ comma/ period/ hyphen/ at sign/ underscore/ tilde)				
		WebContentsStorage				
Settings for when using TM-i's PHP Server. <ul style="list-style-type: none">This section is a required item.						
	PHP	Designates whether to enable / disable the PHP function. <ul style="list-style-type: none">If "Enable" is designated, a microSD card must be inserted before performing EasySetup for TM-i.	●	●	●	●
		"Enable" / "Disable"				
	WebContentsStorage	Designates the save destination for web content. <ul style="list-style-type: none">Designates "microSD" if "PHP" = "Enable".Designates "Printer" if "PHP" = "Disable".	●	●	●	●
"microSD" / "Printer"						
ServerDirectPrint		Settings for when using Server Direct Print. <ul style="list-style-type: none">This section is a required item, but some keys require no descriptions depending on the conditions.				
	Use	Designates whether to enable / disable the Server Direct Print function.	●	●	●	●
		"Enable" / "Disable"				

Section name	Key	Description	TM-i Firmware Version			
		Valid value	Ver. 3 or earlier	Ver. 4.0	Ver. 4.1	Ver. 4.3 or later
	ID	Designates ID for the server-side program to identify TM-i. This ID becomes the user ID used for Digest access authentication. The set value will also be passed as an ID parameter value for the form data posted to the server. • This must be set if "Use" = "Enable".	●	●	●	●
		Within 30 alphanumeric characters (Underscores, periods and hyphens can be used) "" Null characters can also be designated.				
	Password	The Digest access cannot be authenticated for user IDs without passwords. To authenticate the Digest access, configure a password that is not empty. • This must be set if "Use" = "Enable".	●	●	●	●
		Within 30 alphanumeric characters (Underscores, periods and hyphens can be used) "" Null characters can also be designated.				
	ServerAuthentication	Use certificates imported into TM-i to enable/disable server authentication. If a key cannot be found, the current settings are retained. • Do not describe this item when not using server authentication with certificate.	-	●	●	●
		"Enable" / "Disable"				

Section name	Key	Description	TM-i Firmware Version			
		Valid value	Ver. 3 or earlier	Ver. 4.0	Ver. 4.1	Ver. 4.3 or later
	URL	Designates the print data request destination URL.				
		<ul style="list-style-type: none"> Use "URL" and "URL1" to "URL3" as follows: <ul style="list-style-type: none"> "URL": When only one URL is specified (TM-i Firmware Ver.3.x or earlier) "URL1" ~ "URL3": When multiple URLs are specified If "Use" = "Enable", "URL", "URL1", "URL2", or "URL3" is required. When "URL" and "URL1" are specified, "URL1" is valid and "URL" cannot be set. 	●	●	●	●
	Interval	Within 255 alphanumeric characters.				
		Designates the standby time from the complete acquisition of print data until the next acquisition process.				
	URL1 URL2 URL3	<ul style="list-style-type: none"> Use "Interval" and "Interval1" to "Interval3" as follows: <ul style="list-style-type: none"> "Interval": When only one URL is specified (TM-i Firmware Ver.3.x or earlier) "Interval1" ~ "Interval3": When multiple URLs are specified Required if "URL" is specified. When "Interval" and "Interval1" are specified, "Interval1" is valid and "Interval" cannot be set. 	●	●	●	●
		Integer from 1 to 86,400.				
	Interval1 Interval2 Interval3	Designates the print data request destination URL.				
		<ul style="list-style-type: none"> If "Use" = "Enable", "URL", "URL1", "URL2", or "URL3" is required. 	-	●	●	●
	Interval1 Interval2 Interval3	Within 255 alphanumeric characters.				
		Designates the standby time from the complete acquisition of print data until the next acquisition process.				
	Interval1 Interval2 Interval3	<ul style="list-style-type: none"> Required if "URL1 - 3" are specified. 	●	●	●	●
		Integer from 1 to 86,400.				

Section name	Key	Description	TM-i Firmware Version			
		Valid value	Ver. 3 or earlier	Ver. 4.0	Ver. 4.1	Ver. 4.3 or later
StatusNotification	Settings for when using Status Notification function.					
	<ul style="list-style-type: none"> This section is a required item, but some keys require no descriptions depending on the conditions. 					
	Use	Designates whether to enable / disable the Status notification function.	●	●	●	●
		"Enable" / "Disable"				
	ID	Designates ID for the server-side program to identify TM-i. This ID becomes the user ID used for Digest access authentication. The set value will also be passed as an ID parameter value for the form data posted to the server.	●	●	●	●
		<ul style="list-style-type: none"> This must be set if "Use" = "Enable". 				
	Password	Within 30 alphanumeric characters (Underscores, periods and hyphens can be used)				
		"" Null characters can also be designated.				
	ServerAuthentic ation	The Digest access cannot be authenticated for user IDs without passwords. To authenticate the Digest access, configure a password that is not empty.	●	●	●	●
		<ul style="list-style-type: none"> This must be set if "Use" = "Enable". 				
		Within 30 alphanumeric characters (Underscores, periods and hyphens can be used)				
		"" Null characters can also be designated.				
	ServerAuthentic ation	Use certificates imported into TM-i to enable/disable server authentication. If a key cannot be found, the current settings are retained.	-	●	●	●
		<ul style="list-style-type: none"> Do not describe this item when not using server authentication with certificate. 				
		"Enable" / "Disable"				

Section name	Key	Description	TM-i Firmware Version			
		Valid value	Ver. 3 or earlier	Ver. 4.0	Ver. 4.1	Ver. 4.3 or later
	URL	Designates the URL to send the status notification to. <ul style="list-style-type: none">This must be set if "Use" = "Enable".	●	●	●	●
		Within 255 alphanumeric characters. <ul style="list-style-type: none">The protocol is in http or https format.				
	Interval	Designates the wait period from when a status is notified to the next notification operation. <ul style="list-style-type: none">This must be set if "Use" = "Enable".	●	●	●	●
		Integer from 1 to 86,400.				
	General		Settings for administrator informations. <ul style="list-style-type: none">This section is a required item.			
	Administrator	Designates the administrator name displayed on the EPSON TMNet WebConfig (Admin information) page.	●	●	●	●
		Within 255 alphanumeric characters.				
	Location	Designates the installation location displayed on the EPSON TMNet WebConfig (Admin information) page.	●	●	●	●
		Within 255 alphanumeric characters.				
Time		Settings for when using time server. <ul style="list-style-type: none">This section is a required item, but some keys require no descriptions depending on the conditions.				
	Year	Designates the "year" for the time when the TM-i is set. Not required if the time is not set.	●	●	●	●
		Integer from 2011 to 2036				
	Month	Designates the "month" for the time when the TM-i is set. Not required if the time is not set.	●	●	●	●
		Integer from 1 to 12				
	Day	Designates the "day" for the time when the TM-i is set. Not required if the time is not set.	●	●	●	●
		Integer from 1 to 31				
	Hour	Designates the "hour" for the time when the TM-i is set. Not required if the time is not set.	●	●	●	●
		Integer from 0 to 23				

Section name	Key	Description	TM-i Firmware Version			
		Valid value	Ver. 3 or earlier	Ver. 4.0	Ver. 4.1	Ver. 4.3 or later
	Minute	Designates the "minute" for the time when the TM-i is set. Not required if the time is not set.	●	●	●	●
		Integer from 0 to 59				
	Timezone	Designates the timezone.	●	●	●	●
		Integer from -12 to 14				
	UseTimeServer	Designates whether to perform synchronization with TimeServer or not.	●	●	●	●
		"Enable" / "Disable"				
	TimeServer SettingMethod	Designates the timer server setting method.	●	●	●	●
		• If "UseTimeServer" = "Enable", this must be set.				
		• If "UseTimeServer" = "Disable", this is ignored.				
	TimeServer	"Auto" / "Manual"	●	●	●	●
Designates the TimeServer.						
• Required when "UseTimeServer" = "Enable", and "TimerServerSetting-Method" = "Manual".						
	• Ignored when "UseTimeServer" = "Disable", or "TimerServerSettingMethod" = "Auto".	●	●	●	●	
	No more than 254 alphanumeric characters and symbols (including periods)					
Password		Settings for password of EPSON TMNet WebConfig of the TM-i.				
		• This section is a required item.				
		Refer to the printer's Technical Reference Guide for the initial administrator password.				
	NewPassword	Designates the password set in EPSON TMNet WebConfig for the TM-i to be copied.	●	●	●	●
		Within 20 alphanumeric characters.				
	Password	For authentication, designates the password set in EPSON TMNet WebConfig for the TM-i to be copied.	●	●	●	●
		Within 20 alphanumeric characters.				

Section name	Key	Description	TM-i Firmware Version			
		Valid value	Ver. 3 or earlier	Ver. 4.0	Ver. 4.1	Ver. 4.3 or later
EasyKitting		<p>Settings for whether to rename the setting.ini file after the finishing EasySetup.</p> <ul style="list-style-type: none"> This section is not a required item. If not defined, the items are set as follows: "Once"="False" and "UseEncodeURL"="Enable" <p>Describe to change the settings.</p>				
	Once	<p>Designates whether to rename the setting.ini file to setting.ini.done after Easy Setup is complete.</p> <p>If "True" is designated, the setting.ini file is renamed to setting.ini.done. This prevents a setting.ini file that has completed Easy Setup from being used in Easy Setup again.</p>	●	●	●	●
		<ul style="list-style-type: none"> "True": After Easy Setup is complete, the setting.ini file is renamed to setting.ini.done. "False": After Easy Setup is complete, the setting.ini file is not renamed to setting.ini.done. 				
	UseEncodeURL	<p>Designates whether to enable/disable URL encoding for the URL specified in the setting.ini file. Select "Enable" for TM-i firmware Ver. 3.xx or earlier and use URL encoded character strings for the following symbols.</p> <ul style="list-style-type: none"> " (Double quotation mark): %22 % (Percent): %25 & (Ampersand): %26 + (Plus sign): %2B ; (Semicolon): %3B \ (Reverse slant): %5C 	-	●	●	●
		"Enable" / "Disable"				

Section name	Key	Description	TM-i Firmware Version			
		Valid value	Ver. 3 or earlier	Ver. 4.0	Ver. 4.1	Ver. 4.3 or later
Printer-%X%		Registers to TM-i the TM printers used for Epson ePOS SDK, ePOS-Device XML, ePOS-Print XML, and server direct printing. <ul style="list-style-type: none"> This section is a required item and configures the settings for the main printer. When there is an additional printer, copy this section and describe with a changed %X%. Multiple printers can be registered at once by duplicating sections in which the %X% of this section was changed. Enter an integer of 1 or greater for %X%. (Example: Printer-1) For the main printer, specify "" for the IP Address parameter and set the device ID only. 				
	DeviceID	Designates the device ID of the printer.				
		1 to 30 alphanumeric characters/underscores/periods/hyphens	●	●	●	●
	Model	Designates the model of the TM printer.				
		For more information about printers that can be designated, see "Environment" on page 8 .	●	●	●	●
	IPAddress	Designates the IP address. <ul style="list-style-type: none"> To change the device ID for this printer, designate "" (empty string). To register a TM printer, designate the IP address of the TM printer. 				
		<ul style="list-style-type: none"> Format of (numerical value 0 to 255).(numerical value 0 to 255).(numerical value 0 to 255).(numerical value 0 to 254) The following address(es) cannot be used. 127.0.0.1 224.0.0.0 to 239.255.255.255 240.0.0.0 to 255.255.255.255 	●	●	●	●
	RetryInterval	The communication retry interval is designated in units of milliseconds. This setting is ignored for this printer.				
		Integer between 100 and 60,000	●	●	●	●

Section name	Key	Description	TM-i Firmware Version			
		Valid value	Ver. 3 or earlier	Ver. 4.0	Ver. 4.1	Ver. 4.3 or later
NetworkPrinter-%X%		<p>Configures the network settings such as IP address to the TM printer of the designated MAC address. Set this item when configuring the network settings of the printer from TM-i.</p> <ul style="list-style-type: none"> This section is not a required item. Enter an integer of 1 or greater for %X%. (Example: NetworkPrinter-1) Multiple printers can be registered at once by duplicating sections in which the %X% of this section was changed. If add this section to the setting.ini file, when be sure to perform kitting with the TM-i and the TM printer connected to the network. To set wireless LAN, set all related keys. 				
	HostName	Designate null characters.	●	●	●	●
		""				
	MACAddress	Designates the MACAddress for the TM printer whose set. Check the MAC address in advance from the status sheet of the TM printer.	●	●	●	●
		Use the following format. (00~FF):(00~FF):(00~FF):(00~FF):(00~FF):(00~FF)				
	IPAddressSettingMethod	Designates the method for setting the IP address.	●	●	●	●
		"Auto" / "Manual"				
	APIPA	Designates whether to enable / disable the APIPA.	●	●	●	●
		"Enable" / "Disable"				

Section name	Key	Description	TM-i Firmware Version			
		Valid value	Ver. 3 or earlier	Ver. 4.0	Ver. 4.1	Ver. 4.3 or later
	IPAddress	Designates the IP address. <ul style="list-style-type: none"> If "IPAddressSettingMethod" = "Manual", this must be set. If "IPAddressSettingMethod" = "Auto", this is ignored. 				
		<ul style="list-style-type: none"> Format of (numerical value 1 to 255).(numerical value 0 to 255).(numerical value 0 to 255).(numerical value 0 to 254) The following address(es) cannot be used. 127.0.0.1 224.0.0.0 to 239.255.255.255 240.0.0.0 to 255.255.255.255 	●	●	●	●
	SubnetMask	Designates the subnet mask. <ul style="list-style-type: none"> If "IPAddressSettingMethod" = "Manual", this must be set. If "IPAddressSettingMethod" = "Auto", this is ignored. 				
		<ul style="list-style-type: none"> Format of (numerical value 0 to 255).(numerical value 0 to 255).(numerical value 0 to 255).(numerical value 0 to 255) The following address(es) cannot be used. 0.0.0.0 127.0.0.1 255.255.255.255 255.0.255.0 	●	●	●	●
	Gateway	Designates the default gateway. <ul style="list-style-type: none"> This is ignored if "IPAddressSettingMethod" = "Auto". 				
		<ul style="list-style-type: none"> Format of (numerical value 0 to 255).(numerical value 0 to 255).(numerical value 0 to 255).(numerical value 0 to 255) The following address(es) cannot be used. 127.0.0.1 	●	●	●	●
	NetworkMode	Designates the operation mode for wireless LAN.	●	●	●	●
		"Adhoc" / "Infrastructure"				

Section name	Key	Description	TM-i Firmware Version			
		Valid value	Ver. 3 or earlier	Ver. 4.0	Ver. 4.1	Ver. 4.3 or later
	SSID	Designates the SSID.				
		1 to 32 alphanumeric characters and symbols and spaces	●	●	●	●
	AdhocChannel	Designates the adhoc channel used when "NetworkMode" = "Adhoc". If "NetworkMode" = "Infrastructure", designates "1".	●	●	●	●
		"1" to "11"				
	CommunicationStandard	Designates the communication standard for wireless LAN.	●	●	●	●
		"802.11b" / "802.11b/g/n" / "802.11b/g/n"				
	Authentication-Method	Designates the authentication method. • If "NetworkMode" = "Adhoc", designate "OpenSystem" or "SharedKey". • If "NetworkMode" = "Infrastructure", designate "OpenSystem", "SharedKey", or "WPAPSK". (Designates "WPAPSK" when using WPA2PSK.)	●	●	●	●
		"OpenSystem" / "SharedKey" / "WPAPSK"				
	Encryption-Method	Designates the encryption method. • If "Authentication Method" = "OpenSystem", designate "None" or "WEP". • If "Authentication Method" = "SharedKey", designate "WEP". • If "Authentication Method" = "WPAPSK", designate "TKIP" or "AES".	●	●	●	●
		"None" / "WEP" / "TKIP" / "AES"				
	DefaultWEPKey	Designates the WEP key in use (1 to 4).	●	●	●	●
		"WEPKey1" / "WEPKey2" / "WEPKey3" / "WEPKey4"				
	WEPKey1 WEPKey2 WEPKey3 WEPKey4	Designates the WEP key that corresponds to the WEP key number. • For the pass phrase, use 5 or 13 alphanumeric characters and symbols or spaces. • For hexadecimal, use either 10 or 26 alphanumeric characters (0 to 9, a to f, A to F).	●	●	●	●

Section name	Key	Description	TM-i Firmware Version			
		Valid value	Ver. 3 or earlier	Ver. 4.0	Ver. 4.1	Ver. 4.3 or later
	PresharedKey	Designates the pre-shared key used when using WPAPSK or WPA2PSK.	●	●	●	●
		• For the pass phrase, designate between 8 and 63 alphanumeric characters and symbols or spaces.				
	Password	If a password has been set for the target printer, designates the password.	●	●	●	●
		Within 20 alphanumeric characters				
CustomerDisplay		Settings for using the customer display. • This section is a required item.				
	Use	Designates whether to enable/disable the use of customer displays for local connections.	-	●	●	●
		"Enable" / "Disable"				
	Baudrate	Designates the communication speed.	-	●	●	●
		"2400" / "4800" / "9600" / "19200" / "38400" / "57600" / "115200"				
	Databit	Designates the bit length.	-	●	●	●
		"7" / "8"				
	Parity	Designates the parity.	-	●	●	●
		"None" / "Odd" / "Even"				
	Brightness	Designates the brightness.	-	●	●	●
		"100" / "60" / "40" / "20"				
KeyInputDevice-%X%		Settings for using the key input device. • This section is not a required item. • Enter an integer of 1 or greater for %X%. (Example: KeyInputDevice--1) • You can change the %X% and then copy this section, to register multiple devices in one step.				
	DeviceID	Designates the device ID.	-	●	●	●
		Within 30 alphanumeric characters				
	DeviceName	Designates the device name.	-	●	●	●
		Within 64 alphanumeric characters				
	VID	Designates the vender ID.	-	●	●	●
		4 hexadecimal digits				
	PID	Designates the ProductID.	-	●	●	●
		4 hexadecimal digits				
	ControlScript	Designates the name of the script file required to use the device.	-	●	●	●
		Within 255 alphanumeric characters				

Section name	Key	Description	TM-i Firmware Version			
		Valid value	Ver. 3 or earlier	Ver. 4.0	Ver. 4.1	Ver. 4.3 or later
SerialCommunicationDevice		Settings for using the serial communication device. <ul style="list-style-type: none">This section is not a required item.This section is enabled only for printers that have a serial port.				
	Use	Designates whether serial communication is enabled/disabled. "Enable" / "Disable"	-	●	●	●
	Baudrate	Designates the communication speed. "2400" / "4800" / "9600" / "19200" / "38400" "57600" / "115200"	-	●	●	●
	Databit	Designates the bit length. "7" / "8"	-	●	●	●
	Parity	Designates the parity. "None" / "Odd" / "Even" / "Mark" / "Space"	-	●	●	●
	Stopbit	Designates the stop bit. "1" / "1.5" / "2"	-	●	●	●
	FlowControl	Designates the flow control. "None" / "Hardware" / "XOnXOff"	-	●	●	●
Proxy		Configures the proxy settings. <ul style="list-style-type: none">TM-i firmware Ver.4.0 or later: This section is a required item.TM-i firmware Ver.3.x or earlier: This section is not a required item.				
	ProxyURL	Designates the proxy URL. <ul style="list-style-type: none">For TM-i Firmware Ver.3.x or earlier, describe "ProxyURL" in the "WebContents" section. Within 255 alphanumeric characters	-	●	●	●
	ID	Designates the ID to be used for proxy authentication. Within 30 alphanumeric characters (Underscores, periods and hyphens can be used) Null characters can also be designated.	-	●	●	●
	Password	Designates the password to be used for proxy authentication. Within 30 alphanumeric characters (Underscores, periods and hyphens can be used) Null characters can also be designated.	-	●	●	●

Section name	Key	Description	TM-i Firmware Version				
		Valid value	Ver. 3 or earlier	Ver. 4.0	Ver. 4.1	Ver. 4.3 or later	
	UseProxyServerDirectPrint	Designates whether proxy use is enabled/disabled for Server Direct Print.	-	●	●	●	
		"Enable" / "Disable"					
	UseProxyStatusNotification	Designates whether proxy use is enabled/disabled for status notification.	-	●	●	●	
		"Enable" / "Disable"					
	UseProxyWebContentsUpdate	Designates whether proxy use is enabled/disabled for web content updates. ● For TM-i Firmware Ver.3.x or earlier, describe "UseProxy" in the "WebContents" section.	-	●	●	●	
		"Enable" / "Disable"					
	UseProxyDeviceDataNotification	Designates whether proxy use is enabled/disabled for device data notification.	-	-	●	●	
		"Enable" / "Disable"					
	DeviceDataNotification		Settings for Device Data Notification. ● This section is a required item.				
		Use	Designates whether to enable / disable the Device Data Notification function.	-	-	●	●
"Enable" / "Disable"							
ID		Designates ID for the server-side program to identify TM-i. This ID becomes the user ID used for Digest access authentication. The set value will also be passed as an ID parameter value for the form data posted to the server.	-	-	●	●	
		Within 30 alphanumeric characters (Underscores, periods and hyphens can be used) "" Null characters can also be designated.					

Section name	Key	Description	TM-i Firmware Version			
		Valid value	Ver. 3 or earlier	Ver. 4.0	Ver. 4.1	Ver. 4.3 or later
	Password	The Digest access cannot be authenticated for user IDs without passwords. To authenticate the Digest access, configure a password that is not empty.	-	-	●	●
		Within 30 alphanumeric characters (Underscores, periods and hyphens can be used) "" Null characters can also be designated.				
	URL	Specifies the URL that the device data is to be notified to. • If the "UseEncodeURL" ="Disable" in (EasyKitting) section, the URL will be encoded.	-	-	●	●
		Within 255 alphanumeric characters				
	ServerAuthentication	Use certificates imported into TM-i to enable/disable server authentication.	-	-	●	●
		"Enable" / "Disable"				
	BoxID	Specifies the BoxID of the communication box.	-	-	●	●
		Within 30 alphanumeric characters (Underscores, periods and hyphens can be used) "" Null characters can also be designated.				
	PrintError	Specifies whether a notification message is to be printed when a device data notification error occurs.	-	-	●	●
		"Enable" / "Disable"				
	ErrorMessage	Specifies a character string for the notification message.	-	-	●	●
		Within 255 alphanumeric characters				
	Bold	Specifies to whether to enable or disable character decoration (Bold).	-	-	●	●
		"Enable" / "Disable"				
	Underline	Specifies to whether to enable or disable character decoration (Underline).	-	-	●	●
		"Enable" / "Disable"				
	DoubleWidth	Specifies to whether to enable or disable character decoration (Double Width).	-	-	●	●
		"Enable" / "Disable"				

Section name	Key	Description	TM-i Firmware Version			
		Valid value	Ver. 3 or earlier	Ver. 4.0	Ver. 4.1	Ver. 4.3 or later
	DoubleHeight	Specifies to whether to enable or disable character decoration (Double Height).	-	-	●	●
		“Enable” / “Disable”				
	Reverse	Specifies to whether to enable or disable character decoration (Reverse black and white).	-	-	●	●
		“Enable” / “Disable”				
	UpsideDown	Specifies to whether to enable or disable character decoration (Upside Down).	-	-	●	●
		“Enable” / “Disable”				
	Cut	Specifies whether the paper is to be cut after the notification message is printed.	-	-	●	●
		“Enable” / “Disable”				
	PrintSpooler					
		Settings for Print Spooler. ● This section is a required item.				
	Use	Designates whether to enable / disable the Spooler. ● If "PHP" = "Enable" in the (WebContentsStorage) section, set it to "Disable."	-	-	●	●
		“Enable” / “Disable”				
	RetryCount	Specifies the retry count when printing from the spooler.	-	-	●	●
		Integer values 0-60				
	RetryInterval	Specifies the retry interval (sec) when printing from the spooler.	-	-	●	●
		Integer values 1-60				
PrintForwarding						
		Settings for the message to be printed during print forwarding. ● This section is a required item.				
	Message	Specifies a character string for the notification message. ● If the "UseEncodeURL" ="Disable" in (EasyKitting) section, the URL will be encoded.	-	-	●	●
		Within 255 alphanumeric characters				
	Bold	Specifies to whether to enable or disable character decoration (Bold).	-	-	●	●
		“Enable” / “Disable”				
	Underline	Specifies to whether to enable or disable character decoration (Double Width).	-	-	●	●
		“Enable” / “Disable”				

Section name	Key	Description	TM-i Firmware Version			
		Valid value	Ver. 3 or earlier	Ver. 4.0	Ver. 4.1	Ver. 4.3 or later
	DoubleWidth	Specifies to whether to enable or disable character decoration (Double Width).	-	-	●	●
		“Enable” / “Disable”				
	DoubleHeight	Specifies to whether to enable or disable character decoration (Double Height).	-	-	●	●
		“Enable” / “Disable”				
	Reverse	Specifies to whether to enable or disable character decoration (Reverse black and white).	-	-	●	●
		“Enable” / “Disable”				
	UpsideDown	Specifies to whether to enable or disable character decoration (Upside Down).	-	-	●	●
		“Enable” / “Disable”				
	Cut	Specifies whether the paper is to be cut after the notification message is printed.	-	-	●	●
		“Enable” / “Disable”				
	Position	Specifies the position where the notification message is printed.	-	-	●	●
		"Top" / "Bottom"				
PrintForwarding-%X%		Registers the TM printer to be set as the forwarding route to TM-i . <ul style="list-style-type: none">• This section is not a required item.• Enter an integer of 1 or greater for %X%. (Example: PrintForwarding-1)• When registering forwarding routes for multiple printers, copy this section with a changed %X%.• Make sure to perform kitting with the TM printer connected if this section is written in the setting.ini file.				
	DeviceID	Specifies the device ID of printers for which forwarding routes will be set.	-	-	●	●
		Within 30 alphanumeric characters				
	Candidate1	Specifies the device ID of the forwarding destination printer to be used if printing to the printer specified in "DeviceID" fails.	-	-	●	●
		Within 30 alphanumeric characters				
	Candidate2	Specifies the device ID of the forwarding destination printer to be used if printing to the printers specified in "DeviceID" and "Candidate1" fails.	-	-	●	●
		Within 30 alphanumeric characters				

Section name	Key	Description	TM-i Firmware Version			
		Valid value	Ver. 3 or earlier	Ver. 4.0	Ver. 4.1	Ver. 4.3 or later
DataNotificationDevice-%X%		Registers the device to be used for Device Data Notification. <ul style="list-style-type: none"> This section is not a required item. Enter an integer of 1 or greater for %X%. (Example: DataNotificationDevice-1) Multiple printers can be registered at once by duplicating sections in which the %X% of this section was changed. Make sure to perform kitting with the device connected if this section is written in the setting.ini file. 				
	DeviceID	Specifies the device ID of the device to be used for the device data notification function.	-	-	●	●
		Within 30 alphanumeric characters				
SSL		Settings for SSL. <ul style="list-style-type: none"> This section is not a required item. 				
	Use	Designates whether SSL function is enabled/disabled.	-	-	-	●
		"Enable" / "Disable"				
	CreateSelfSignedCert	Specifies whether a self signed certificate file is to be created. <ul style="list-style-type: none"> If the "CreateSelfSignedCert" ="Enable" in (SSL) section, TM-i create a self-signed certificate file. The user does not need to prepare a certificate file. 	-	-	-	●
		"Enable" / "Disable"				

Using EasyKittingUtility.xls

This section explains how to use the utility (EasyKittingUtility.xls) for creating and editing setting.ini files.

"EasyKittingUtility.xls" has a function for reading and writing "setting.ini" files. It can be used to create, read, and edit "setting.ini" files.

Operating environment

OS

- Microsoft Windows 11
- Microsoft Windows 10 (32 / 64 bit)
- Microsoft Windows 8.1 (32 / 64 bit)
- Microsoft Windows 8 (32 / 64 bit)
- Microsoft Windows 7 SP1(32 / 64 bit)
- Microsoft Windows Vista SP2(32 / 64 bit)
- Microsoft Windows XP SP3(32 bit)

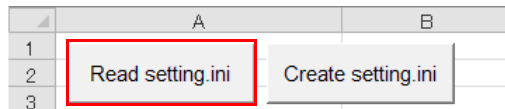
Application

- Microsoft Excel 2003 or later

Usage

Use the following procedure.

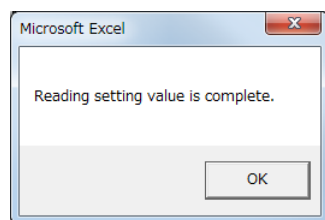
- 1 Open the "EasyKittingUtility.xls" file included with this manual in Microsoft Excel.
- 2 Click the (Read setting.ini) button.



- 3 The (Open) window is displayed. Select "setting.ini", and then click the (Open) button.

The content of the "setting.ini" file is shown in "EasyKittingUtility.xls".

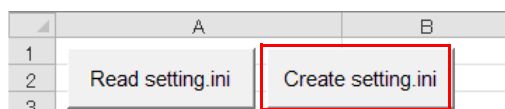
- 4 If the file is read successfully, the following window will be displayed. Click the (OK) button.



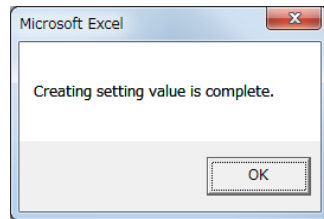
- 5 Edit each cell according to the setting content.
For more information about the editing method, see ["Editing setting values" on page 43](#).

	A	B
1	Read setting.ini	Create setting.ini
2		
3		
4	Wired General	
5	Link Speed	AutoNegotiation
6	Wired Network	
7	IP Address Setting Method	Manual
8	APIPA	Disable
9	IP Address	192.168.192.168
10	Subnet Mask	255.255.255.0
11	Gateway	

- 6 After editing is complete, click the (Create setting.ini) button.



- 7 The (Save As) window is displayed. Select the save destination for the "setting.ini" file and then click the (Save) button.
- 8 If the "setting.ini" file is saved successfully, the following window is displayed. Click the (OK) button.


NOTE

Exported "setting.ini" files can be read and edited again by clicking the [Read setting.ini] button .

Editing setting values

Entering setting values

Use the following procedure to enter setting values.

- Directly entering values in cells

	A	B
1		
2	Read setting.ini	Create setting.ini
3		
4	Wired General	
5	Link Speed	AutoNegotiation
6	Wired Network	
7	IP Address Setting Method	Manual
8	APIPA	Disable
9	IP Address	192.168.192.168
10	Subnet Mask	255.255.255.0

- Selecting from a list

	A	B
1		
2	Read setting.ini	Create setting.ini
3		
4	Wired General	
5	Link Speed	AutoNegotiation
6	Wired Network	
7	IP Address Setting Method	10BaseTHalf
8	APIPA	10BaseTFull
9	IP Address	100BaseTHalf
10	Subnet Mask	100BaseTFull

NOTE

When using a printer that can be controlled, enter the setting values for the number of printers to be registered under [Printer] and [Network-Printer].

* When registering no printers

	A	B
1	Read setting.ini	Create setting.ini
2		
3		
81	Printer	
82	Device ID	local_printer
83	Model	
84	IP Address	
85	Retry Interval	
86	NetworkPrinter	
87	Network Interface	
88	MACAddress	
89	Password	

* Registering a single wired LAN printer

	A	B	C
1	Read setting.ini	Create setting.ini	EasyKittingUtility Ver.
2			
3			
81	Printer		
82	Device ID	local_printer	floor_printer
83	Model		TM-T88V
84	IP Address		192.168.192.10
85	Retry Interval		100
86	NetworkPrinter		
87	Network Interface	Wired	
88	MACAddress	01:23:45:67:89:AB	
89	Password		

* Registering one wired LAN printer and one wireless LAN printer

	A	B	C	D
1	Read setting.ini	Create setting.ini	EasyKittingUtility Ver.1.00	
2				
3				
81	Printer			
82	Device ID	local_printer	floor_printer	kitchen_printer
83	Model		TM-T88V	TM-T70
84	IP Address		192.168.192.10	192.168.192.20
85	Retry Interval		100	100
86	NetworkPrinter			
87	Network Interface	Wired	Wireless	
88	MACAddress	01:23:45:67:89:AB	01:23:45:67:89:AB	
89	Password			

Input items for Printer cells

Be sure to designate a printer that designates this printer in the Printer cell.

If the TM-i is designated, indicate only the Device ID and leave all other items empty.

1		
2	Read setting.ini	Create setting.ini
3		
81	Printer	
82	Device ID	local_printer
83	Model	
84	IP Address	
85	Retry Interval	

Input items for disabled settings

Items with grayed out setting values are disabled.

96	AdhocChannel		
97	CommunicationStandard	802.11b/g	802.11b/g
98	AuthenticationMethod	OpenSystem	OpenSystem
99	EncryptionMethod	None	None
100	DefaultWEPKey	WEPKey1	WEPKey1

Saving web content

Web content files vary according to the environment in which they are built. Save the files required for the environment you are using on a USB memory stick.

Easy Setup for the TM-i

This section explains how to use TM-i easy setup to copy EPSON TMNet WebConfig settings.

Flow of the Easy Setup

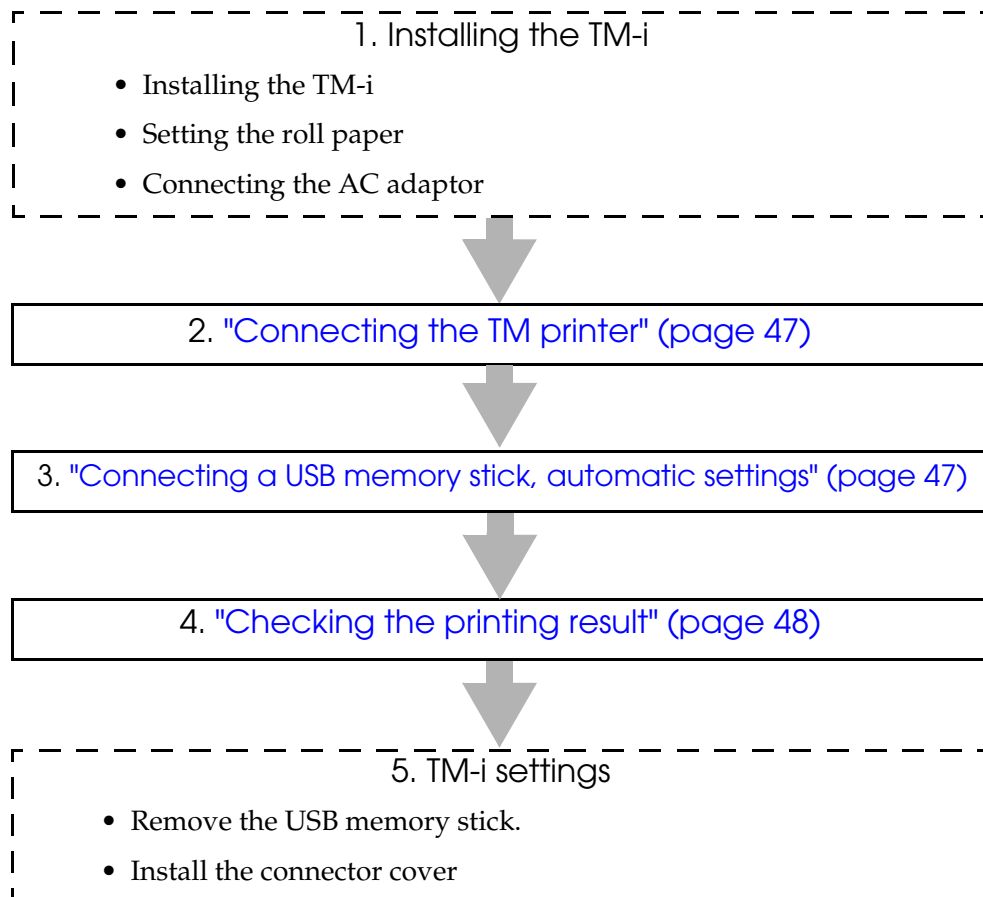
CAUTION

- While performing an easy setup, you cannot install the LAN cable wireless set (OT-WL01). Install the LAN cable wireless set (OT-WL01) after easy setup is complete. Refer to the printer's Technical Reference Guide for the initial administrator password.
- Set the roll paper beforehand to print the setting result.

NOTE

In this set-up flow, items explained in this manual are framed in an solid line, while items where you must refer to the user's manual for each TM-i are framed in a dotted line.

Install TM-i using this Easy Setup through the following flow.



Connecting the TM printer

Perform the following steps when using a TM printer.

- 1 Connect the TM printer to the TM-i after inserting the roll paper into the TM printer and checking that the power is off.

Printer that can be controlled	Connection method
Wired LAN printer	Connect TM-i and the TM printer to a network.
Wireless LAN printer	Use a USB cable to connect the printer to the TM-i. Refer to the Technical Reference Guide for the wireless LAN interface in use for details about the types of USB cable that can be used.

- 2 While pushing the button on the rear of the TM printer, turn on the power to the TM printer and continue to hold down the button until the initialization message (Resetting to Factory Default) is printed.
Interface settings will return to factory default settings.

NOTE

Refer to the Technical Reference Guide for each interface for the length of time to hold down the button.

3

Connecting a USB memory stick, automatic settings

- 1 Insert the USB memory stick into a USB port on the rear panel of TM-i.
- 2 Turn on the TM-i power. The settings are started automatically.
- 3 After setting processing is completed, the setting result is printed. Check the printing result.
Refer to ["Checking the printing result" on page 48](#).
- 4 If you are using a TM printer, print out a TM printer status sheet.
Check if the TM printer settings (IP address, SSID, etc.) were changed successfully.

Checking the printing result

The following is an example of the printing result.

Setting Success!

```
*****
EPSON Status Sheet
*****
```

<General Information>

```
Firmware
  X.XXWW rXXXX.X
ePOS-Device
  x.xx
Model
  TM-T88V-i
Time
  11-May-2014 12:00:00
  GMT+09:00
Administrator Name
  Tom
Location/Person
  Counter001
```

<Wired>

```
MAC Address
  **:**:**:**:**
Link Speed & Duplex
  Auto Negotiate
```

<Wired TCP/IP>

```
Get IP Address
  Manual
Set using Automatic Private IP Addressing
(APIPA)
  Disable
IP Address
  192.168.192.168
Subnet Mask
  255.255.255.0
Default Gateway
  -
Acquire DNS Server Address Automatically
  Disable
DNS Server Address
  -
```

<Wireless>

```
MAC Address
  -
Hardware Version
  -
Software Version
  -
Communication Standard
  802.11b/g
Network Mode
  Infrastructure
SSID
  EpsonNet
Wireless LAN Frequency Region
  -
Ad-Hoc Channel
  1
Authentication Method
  Open System
Security Mode
  None
```

```
<Wireless TCP/IP>
Get IP Address
  Manual
Set using Automatic Private IP Addressing
(APIPA)
  Disable
IP Address
  192.168.192.168
Subnet Mask
  255.255.255.0
Default Gateway
  -
Acquire DNS Server Address Automatically
  Disable
DNS Server Address
  -
```

<Time Server Setting>

```
Use Time Server
  Disable
Get Time Server
  Manual
Time Server
  -
```

<Proxy Configuration>

```
Proxy URL
  -
ID
  -
Web Contents Update UseProxy
  Disable
Server Direct Print UseProxy
  Disable
Status Notification UseProxy
  Disable
Device Data Notification UseProxy
  Disable
```

<Device>

```
local_printer
  TM-T88V-i
  Connection Enable
```

<Customer Display>

```
local_display
Use
  Enable
Communications speed (bps)
  9600
Data bit
  8
Parity
  None
Brightness setting
  100
```

<KeyInput Device>

```
<Serial Communication Device>
local_serial
use
  Enable
Communications speed (bps)
  9600
Data bit
  8
Parity
  none
Stop bit
  1
Flow control
  none
```



```
<Device Data Notification>
Use
  Disable

<Web Contents Update>
Use Automatic Update
  No
Date of Installed Web Contents
  -
Date of Last Automatic Update
  -
Status of Last Automatic Update
  Not updated automatically yet

<Server Direct Print>
Use
  Disable

<Status Notification>
Status Notification
  Disable

<PHP>
Use PHP
  No
<PrintSpooler>
Use
  Disable

<Syslog Storage>
Use microSD
  No

<SSL>
Use
  Enable
```

Troubleshooting

If an error occurs, the contents of the error are printed in the printing result. Refer to the solutions below to solve the issue.

Process	Printing result when an error occurs	Solution
During set-up preparation	not exist "WebContents->UseProxy" key.	The setting.ini file for TM-i Firmware Ver.4.1/4.0 was used for kitting for TM-i with TM-i Firmware Ver.3.x. <ul style="list-style-type: none"> • In the "WebContents" section of the setting.ini file, "UseProxy" and "ProxyURL" keys are required. • Correct the setting.ini file to the one for TM-i Firmware Ver.3.x according to this manual.
	not exist "CustomerDisplay->Use" key.	The setting.ini file for TM-i Firmware Ver.3.x was used for kitting for TM-i with TM-i Firmware Ver.4.1/4.0. <ul style="list-style-type: none"> • Correct the setting.ini file to the one for TM-i Firmware Ver.4.1/4.0 according to this manual. • For TM-i Firmware Ver.4.0, the following items are required: (The "CustomerDisplay" section and its keys, the "SerialCommunicationDevice" (for TM-i with serial port) and its keys, and the "Proxy" section and its keys.) • For TM-i Firmware Ver.4.1, the following items are required in addition to the keys for TM-i Firmware Ver.4.0: (("UseProxyDeviceDataNotification" key in the "Proxy" section, the "PrintSpooler" section and its keys, the "PrintForwarding" section and its keys, and the "DeviceDataNotification" section and its keys)
	not exist "%Section%->%Key%" key. <Example> not exist "WiredLinkLayer->Link-Speed" key.	Could not find the %Key% key for the %Section% in the setting.ini file. Check and correct the content of the setting.ini file.
	Invalid setting.ini found.	The format of the setting.ini file is not correct. Check the format of the setting.ini file.
	Multiple setting.ini found.	Multiple USB memories with setting.ini files were found. Only connect one USB memory with the setting.ini file stored.
	Password does not match.	Failed to authenticate password for EPSON TMNet WebConfig. Correct the value for the Password key in the Password section of the setting.ini file.

Process	Printing result when an error occurs	Solution
During set-up preparation	Multiple sections which to register local printer found.	Found multiple Printer-%X% sections to be registered as a local printer. Please designate only one Printer-%X% section as a local printer.
	Multiple sections which has the same name found.	Multiple sections with the same name were found for Printer-%X%, NetworkPrinter-%X%, PrintForwarding-%X%, or DataNotificationDevice-%X%. Change the integer value for %X% so that there are no duplicate names.
	The section which to register local printer not found.	Could not find the Printer-%X% section to be registered as a local printer. Please designate the Printer-%X% to use as a local printer.
	Multiple sections as which Host-Name is the same found.	Found multiple NetworkPrinter-%X% sections with the same HostName key. Designates different HostName key values for each NetworkPrinter-%X% section.
	Multiple sections as which MACAddress is the same found.	Found multiple NetworkPrinter-%X% sections with the same MACAddress key. Designates different MACAddress key values for each NetworkPrinter-%X% section.
	Both key are set to Enable "WebContentsStorage->PHP" "PrintSpooler -> Use"	Both of the following two keys are set to "Enable." Set only one to "Enable." <ul style="list-style-type: none"> • PHP key for the WebContentsStorage section • Use key for the PrintSpooler section
	Invalid%Key% <Example> InvalidIPAddress	The format for the %Key% key in the setting.ini file is not correct. Check and correct the key for the setting.ini file.
Applying New settings	DeviceNotFound	Could not find the TM printer designated by the MACAddress key in the (NetworkPrinter-%X%) section. Connect the applicable TM printer, and confirm that the power is on.
	DeviceNotWireless	Although wireless LAN settings are designated in the (NetworkPrinter-%X%) section, the printer detected at the MACAddress of the same section is a wired LAN printer. Delete the wireless LAN settings for the applicable printer. Or, if setting a wireless LAN TM printer, connect it with a USB cable.

Process	Printing result when an error occurs	Solution
Web content deployment	WebContents not found.	Could not find the designated web content file. Check and correct the content of the AppliedLocalFile key in the (WebContents) section.
	Failed to extract the Web Contents.	The designated web content file is incorrect. Check and correct the content of the file designated by the AppliedLocalFile key in the (WebContents) section.
	Not enough space to extract the Web Contents	The size of the designated web contents file exceeds 30 MB. Check if the file size designated by the AppliedLocalFile key in the (WebContents) section is 30 MB or less and correct the error.
	microSD Card is not found	(WebContentsStorage) section Though the (WebContentsStorage) section is specified as "WebContentsStorage" = "microSD", no microSD cards are inserted in the TM-i. Check if a microSD card is inserted in the TM-i.
	Failed to import certificates	The certificate file included in the specified web contents file is incorrect. Check and correct the content of the file designated by the AppliedLocalFile key in the (WebContents) section.
	Failed to update ssl settings	Failed to update the SSL certificate contained in the web content (zip). Check the contents and combination of server certificates, private keys and certificate chains (optional) in use.