

Network Interface Panel User's Guide

Contents

Copyright and Trademarks

Safety Instructions

Important Safety Instructions.	4
Cautions and Notes.	4

Getting to Know Your Network Interface Panel

Package Contents.	5
Using the Cable Clips.	6
Panel parts.	7

Setting Up the Network Interface Panel

Connecting the Network Interface Panel to a Network.	8
Configuring Scanning Software on Your Computer.	11
Connecting to an IPv4 Network Automatically	11
Connecting to an IPv4 Network Manually.	12
Connecting to an IPv6 Network.	14
Using EpsonNet Config.	14
Operating Environment.	15

Scanning an Image

Configuring Scanning Software on Your Computer.	16
Configuring EPSON Scan.	16
Configuring Epson Scan 2.	17
Scanning Over a Network.	18
For Windows.	19
For Mac OS X.	19
Scanning from the Panel.	19

About the Control Panel

Menu List.	21
Environment menu.	21
Display menu.	21
Energy saving menu.	21
Network menu.	21
Timeout menu.	22
Restore settings menu.	22

Troubleshooting

Problems Indicated by Messages on the LCD Panel or Status Lights.	23
Problems and Solution.	23
The LCD screen is not displayed even when the scanner is on.. . . .	24
The scanner does not scan.. . . .	24
Web-based EpsonNet Config cannot be started or be made settings.. . . .	25

Technical Specifications

System Requirements.	26
For Windows.	26
For Mac OS X.	26
Network Interface Panel Specifications.	26
General.	26
Mechanical.	26
Electrical.	27
Environmental.	27
Interfaces.	27
Standard and Approvals.	27

Copyright and Trademarks

Copyright and Trademarks

No part of this publication may be reproduced, stored in a retrieval system, or transmitted in any form or by any means, electronic, mechanical, photocopying, recording, or otherwise, without the prior written permission of Seiko Epson Corporation. No patent liability is assumed with respect to the use of the information contained herein. Neither is any liability assumed for damages resulting from the use of the information contained herein.

Neither Seiko Epson Corporation nor its affiliates shall be liable to the purchaser of this product or third parties for damages, losses, costs, or expenses incurred by the purchaser or third parties as a result of: accident, misuse, or abuse of this product or unauthorized modifications, repairs, or alterations to this product.

Seiko Epson Corporation and its affiliates shall not be liable against any damages or problems arising from the use of any options or any consumable products other than those designated as Original Epson Products or Epson Approved Products by Seiko Epson Corporation.

EPSON® is a registered trademark, and EPSON EXCEED YOUR VISION or EXCEED YOUR VISION are trademarks of Seiko Epson Corporation. Microsoft®, Windows®, and Windows Vista® are registered trademarks of Microsoft Corporation.

Apple®, Macintosh® and Mac OS® are registered trademarks of Apple Inc.

General Notice: Other product names used herein are for identification purposes only and may be trademarks of their respective companies.

Copyright © 2021 Seiko Epson Corporation. All rights reserved.

Safety Instructions

Safety Instructions

Important Safety Instructions

Read all these instructions and save them for later reference.

Follow all warnings and instructions marked on the Network Interface Panel.

- ☐ Do not spill liquid onto the Network Interface Panel.
- ☐ Except as specifically explained in this User's Guide, do not attempt to service the Network Interface Panel yourself.

Cautions and Notes

In this document, cautions and notes indicate the following:

**Cautions**

must be followed carefully to avoid bodily injury.

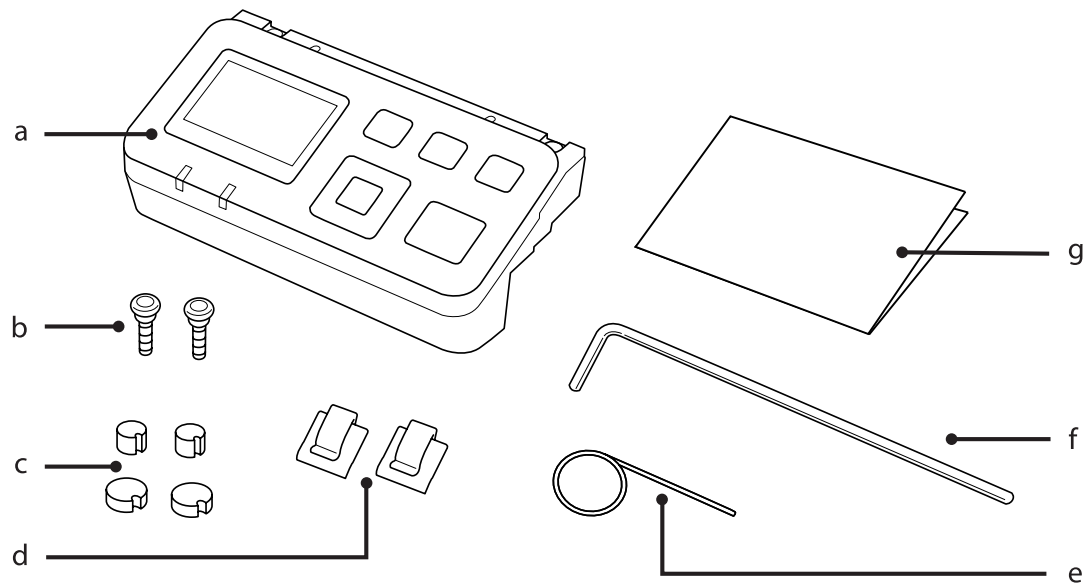
Notes

contain important information and useful tips on the operation of this product.

Getting to Know Your Network Interface Panel

Getting to Know Your Network Interface Panel

Package Contents

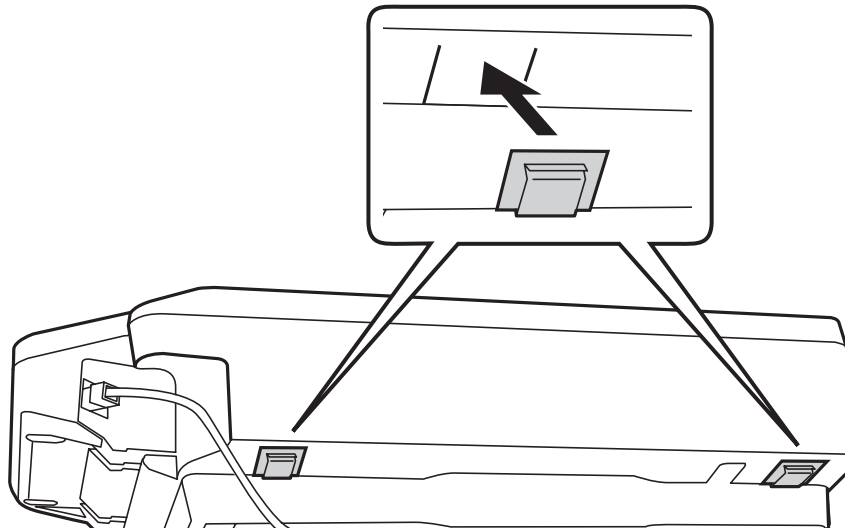


a	Network Interface Panel	This product.
b	Screws (2 pieces)	Fixes the Network Interface Panel to the scanner.
c	Covers (4 pieces)	Spare covers for the screw holes. Because the size of the covers differs depending on the model, make sure you use the covers that match the size of the scanner being used.
d	Cable Clips (2 pieces)	Fixes the network cable to the scanner.
e	Pin	Use this to remove the screw hole covers.
f	Allen Key	Use this to tighten and remove the screws.
g	Setup Guide	The paper manual for this product.

Getting to Know Your Network Interface Panel

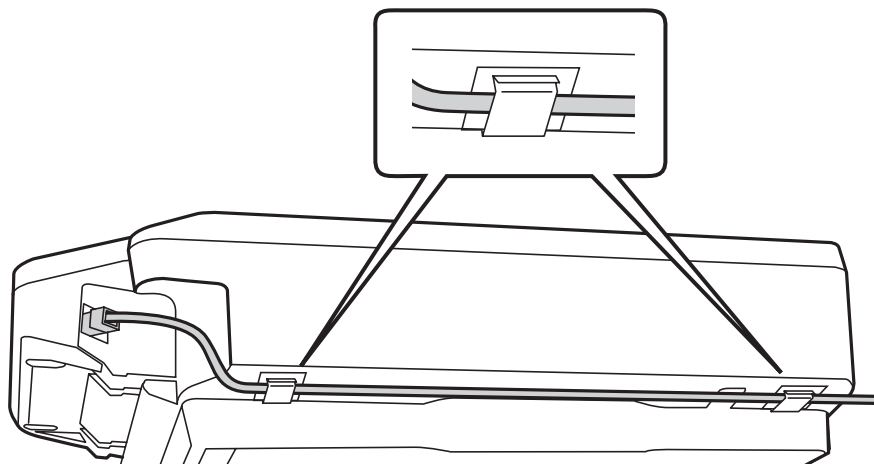
Using the Cable Clips

- 1 Attach the cable clips to the scanner.



Note:
Attach so that the opening of the cable clip is facing out.

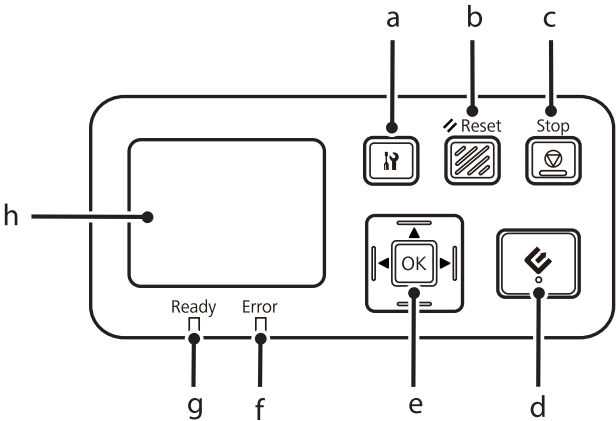
- 2 Use the cable clips to fix the network cable to the scanner.



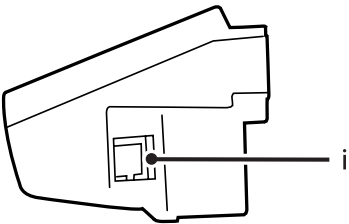
Getting to Know Your Network Interface Panel

Panel parts

Front view



Right side view



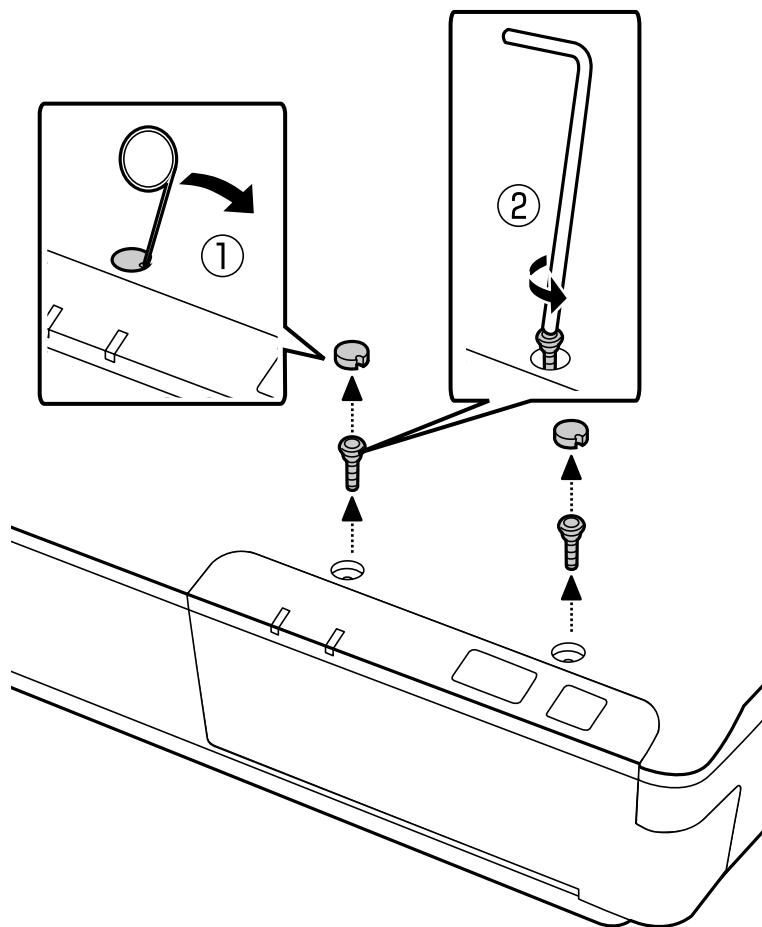
a	setting button	Make product and network settings, or perform maintenance.
b	Reset button	Resets the panel to the initial screen.
c	Stop button	Cancels scanning.
d	start button	Starts scanning. In a network environment, the start button on the scanner works the same way as clicking Scan in the Document Capture Pro or scanner driver window.
e	OK/Arrow button	Use the arrow buttons to select an item, and then press OK to confirm the selection.
f	Error light (orange)	On when an error has occurred.
g	Ready light (green)	On when the scanner is ready. Off when the scanner is not ready.
h	LCD panel	Displays the status, operation, and error messages.
i	Network connector	Connects the network cable.

Setting Up the Network Interface Panel

Setting Up the Network Interface Panel

Connecting the Network Interface Panel to a Network

- 1 Turn off the product and disconnect the USB cable.
- 2 Remove the covers with the pin, and then remove the screws with the allen key.

**Caution:**

Be careful when setting up as the pin and the allen key are sharp and may cause injury.

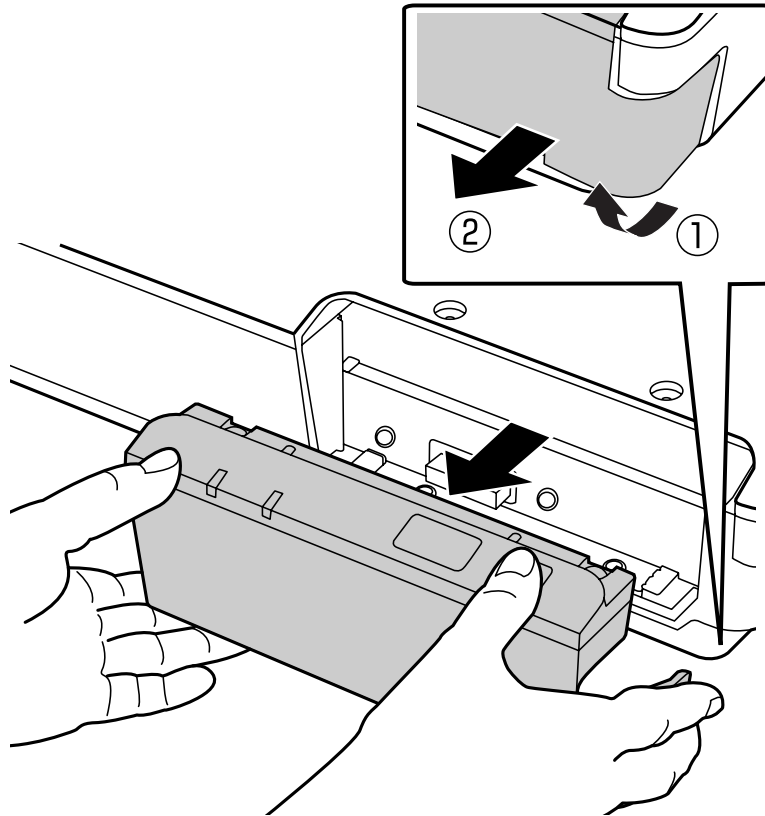
Note:

Use only the pin and allen key that comes with this panel.

Setting Up the Network Interface Panel

3

Remove the panel supplied with your scanner.

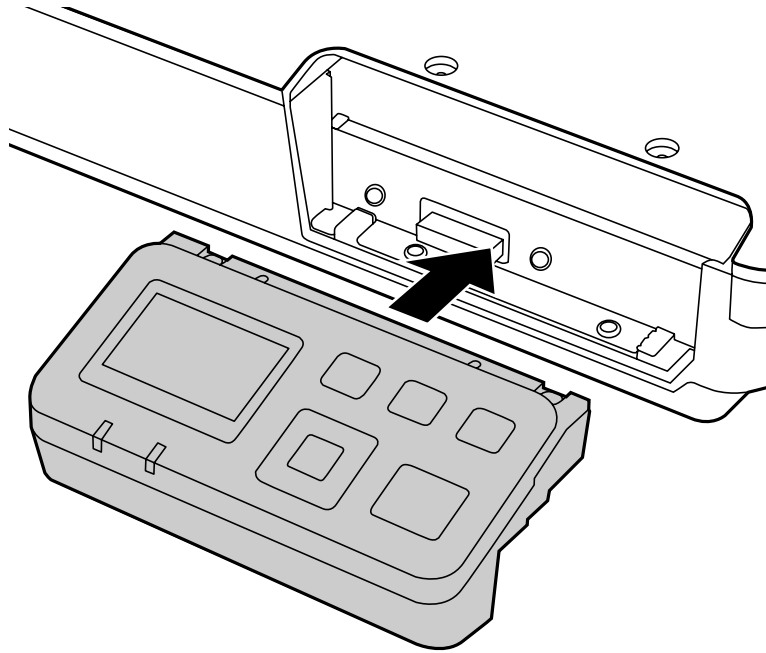


Note:

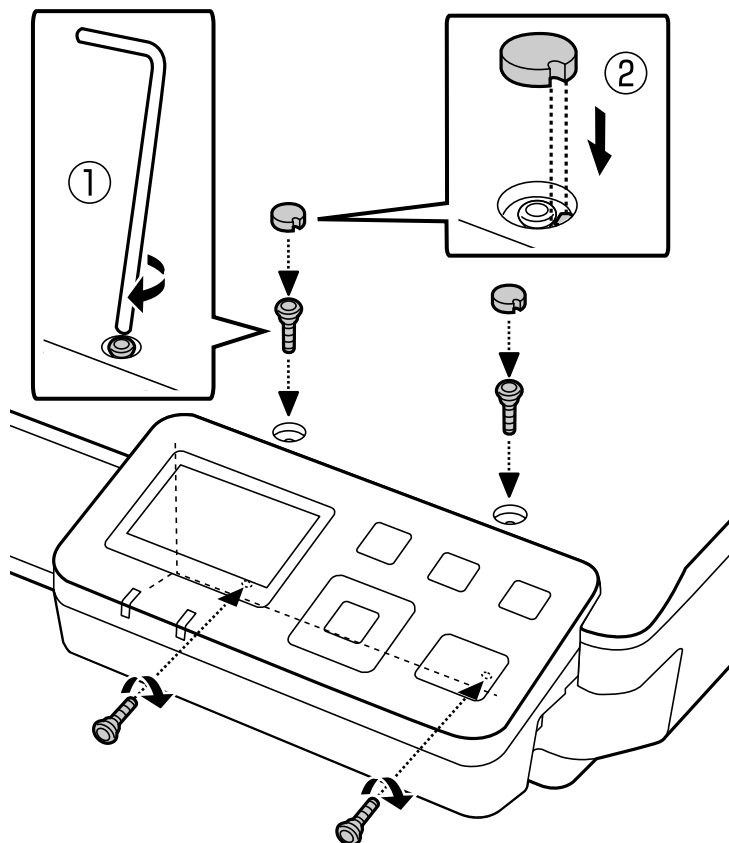
- ☐ Keep the panel in a safe place.
- ☐ You cannot use the scanner unless you replace the panel you removed in step 3, or attach the Network Interface Panel.

Setting Up the Network Interface Panel

- 4** Install the Network Interface Panel.



- 5** Tighten the screws, and then replace the covers.



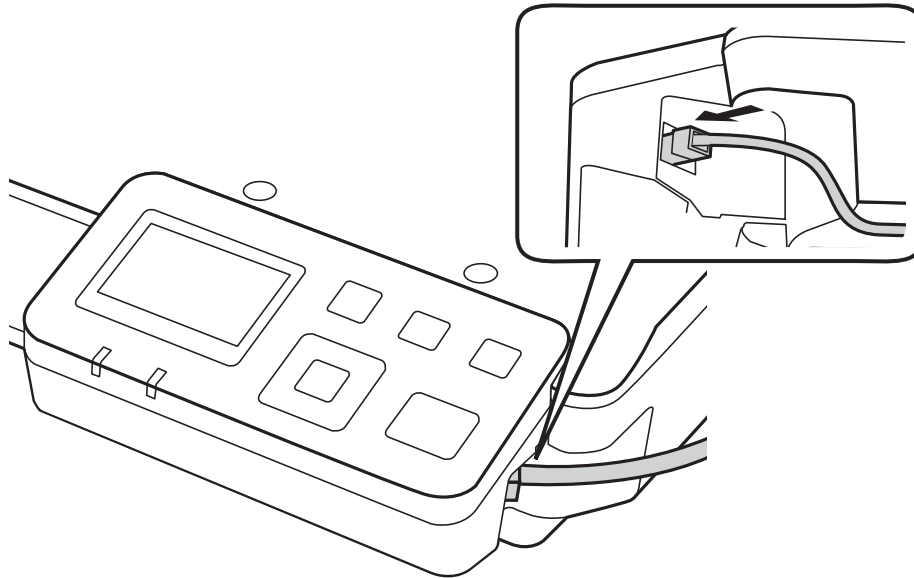
Setting Up the Network Interface Panel

Note:

Use the same covers and screws that you removed in step 2.

6

Connect a network cable to the Network Interface Panel.

**Note:**

- ☐ You must use a Category 5 shielded twisted-pair cable to connect the Network Interface Panel to prevent malfunction.
- ☐ The network cable is not supplied with the product.
- ☐ You cannot use a network cable at the same time as a USB connection.

7

Fix the network cable using the cable clips.

 [“Using the Cable Clips” on page 6](#)


Configuring Scanning Software on Your Computer

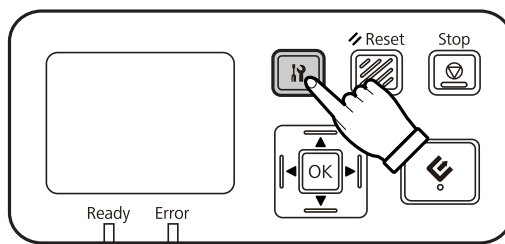
Connecting to an IPv4 Network Automatically

1

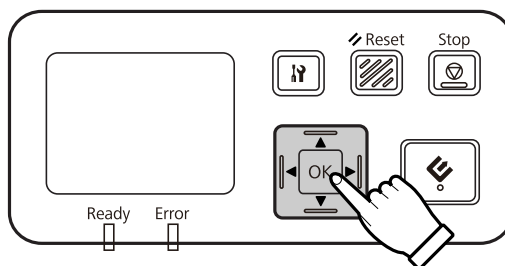
Turn on your scanner.

Setting Up the Network Interface Panel

- 2 When the home screen ("Scanner is ready") is displayed, press the  setting button.




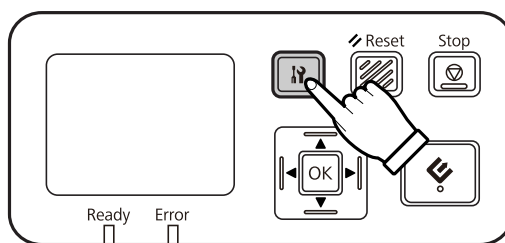
- 3 Select **Network** with the ▲ up and ▼ down buttons, and then press the OK button.



- 4 Select **IPv4** with the ▲ up and ▼ down buttons, and then press the OK button.

- 5 Select **Auto** with the ▲ up and ▼ down buttons, and then press the OK button.

- 6 Press the  setting button to return to the home screen.



- 7 After "Configuring network setting" is displayed, restart the panel.


Set the password for protecting network security using Web-based EpsonNet Config.

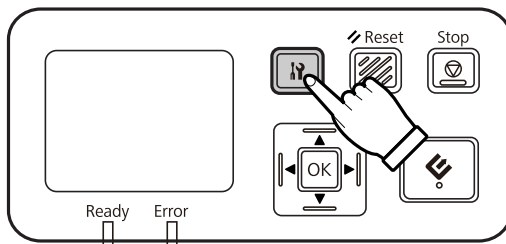
 ["Using EpsonNet Config" on page 14](#)

Connecting to an IPv4 Network Manually

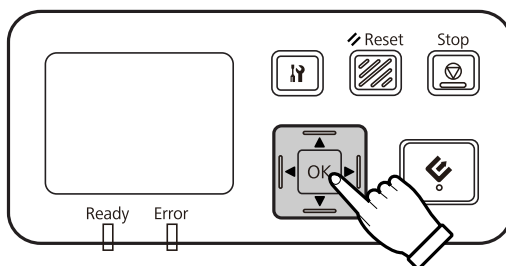
- 1 Turn on your scanner.

Setting Up the Network Interface Panel

- 2 When the home screen ("Scanner is ready") is displayed, press the  setting button.



- 3 Select **Network** with the ▲ up and ▼ down buttons, and then press the OK button.




- 4 Select **IPv4** with the ▲ up and ▼ down buttons, and then press the OK button.

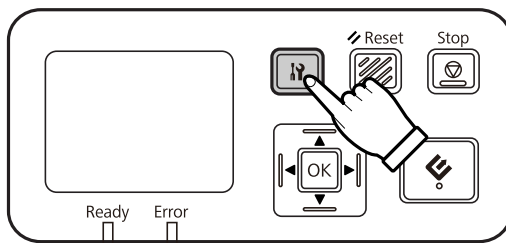
- 5 Select **Manual** with the ▲ up and ▼ down buttons, and then press the OK button.

- 6 Select **IP address** with the ▲ up and ▼ down buttons, and then press the OK button.

- 7 Set the IP address with the arrow buttons, and then press the OK button.

- 8 Repeat steps 6 and 7 to set the IP subnet mask and IP default gateway settings, and then press the OK button.

- 9 Press the  setting button to return to the home screen.




- 10 After "Configuring network setting" is displayed, restart the panel.

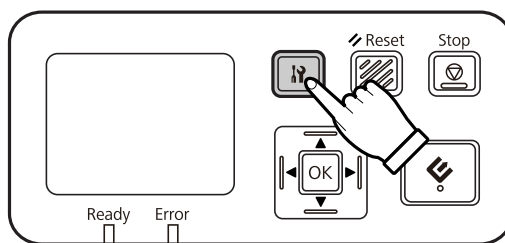
Set the password for protecting network security using Web-based EpsonNet Config.

 ["Using EpsonNet Config" on page 14](#)

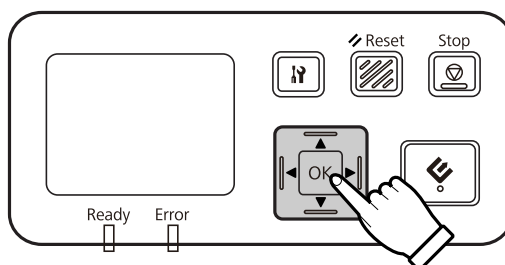
Setting Up the Network Interface Panel

Connecting to an IPv6 Network

- 1 Turn on your scanner.
- 2 When the home screen ("Scanner is ready") is displayed, press the  setting button.

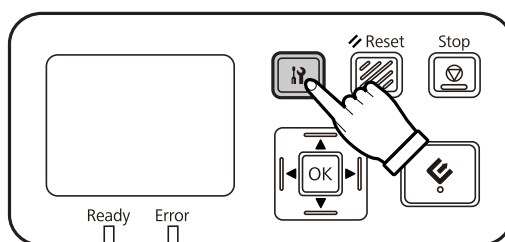


- 3 Select **Network** with the ▲ up and ▼ down buttons, and then press the OK button.



- 4 Select **IPv6 - On** with the ▲ up and ▼ down buttons, and then press the OK button.

- 5 Press the  setting button to return to the home screen.




- 6 After "Configuring network setting" is displayed, restart the panel.

Note:

Use the Web-based EpsonNet Config to make manual settings for IPv6.

Set the password for protecting network security using Web-based EpsonNet Config.

 ["Using EpsonNet Config" on page 14](#)

Using EpsonNet Config

Web-based EpsonNet Config is software that is stored on the Network Interface Panel.

Setting Up the Network Interface Panel

You can launch the software from a computer on the network using a Web browser and so on. You can make network interface settings (TCP/IP and so on) and scanner settings (various checks and settings).

To start Web-based EpsonNet Config, enter the IP address for this panel in the address bar of a Web browser.

Note:

- ❑ Web-based EpsonNet Config cannot be used if the IP address has not been set in the network interface.
- ❑ See EpsonNet Config online help for more details.

Note:

You can also use EpsonNet Config for Windows/Macintosh.

- ❑ EpsonNet Config for Windows is a Windows-based configuration utility for administrators that allows you to configure the network interface for various protocols such as TCP/IP, MS Network, AppleTalk, IPP, and SNMP.
- ❑ EpsonNet Config for Macintosh is a Macintosh-based configuration utility for administrators that allows you to configure the network interface for TCP/IP, AppleTalk, and IPP.

Download this software from:

<http://www.epson.com/>

Operating Environment

You can use Web-based EpsonNet Config on computers with the following Web browsers.

Supported Web Browsers	Web Browser Version
Microsoft Internet Explorer	IE8.0 or later
Mozilla FireFox	Ver 3.5 or later
Safari	Ver 4.0 or later
Google Chrome	Ver 4.0 or later
Opera	Ver 10.0 or later

Scanning an Image

Scanning an Image

Configuring Scanning Software on Your Computer

Make sure your scanner and Network Interface Panel are turned on and working properly. Then follow the steps below to use the scanner driver program to enable network scanning.

Note:

Either EPSON Scan or Epson Scan 2 is come with your scanner as the scanner driver. See the user's guide of the scanner for more details.

Before you start, obtain the following information:

- ☐ A valid IP address for the Network Interface Panel. Ask your network administrator for an IP address which will not cause conflict with any other device on the network. If you are the network administrator, choose an address within the subnet which will not cause conflict with any other device.
- ☐ The MAC (Ethernet hardware) address of the Network Interface Panel. This is a unique number for your Network Interface Panel which is different from the hardware serial number of the Network Interface Panel. You can find out the MAC address on the Network Interface Panel.

Note for Windows:

Log in as a user with administrator's authority, and then install. If you are asked to enter an administrator's password, enter the password, and then continue with the operations.

Note for Mac OS X:

- ☐ Do not use the Fast User Switching function while using your scanner.
- ☐ You must log on to a Computer Administrator account.

Note:

You need to install the latest firmware for the Network Interface Panel before scanning. Go to the Epson home page to download the Epson Firmware Updater for the Network Interface Panel.

 <http://www.epson.com>

After downloading, start Epson Firmware Updater, and then follow the on-screen instructions. If the latest firmware is already installed on the Network Interface Panel, you do not need to update the firmware.

Configuring EPSON Scan

1

Obtain the IP address or host name of the Network Interface Panel from your network administrator.

2

Start EPSON Scan Settings.

Windows 10:

Click the start button, and then select **All apps > EPSON > EPSON Scan Settings**

Scanning an Image

Windows 8.1/Windows 8:

Enter the application name in the search charm, and then select the displayed icon.

Windows 7/Windows Vista/Windows XP:

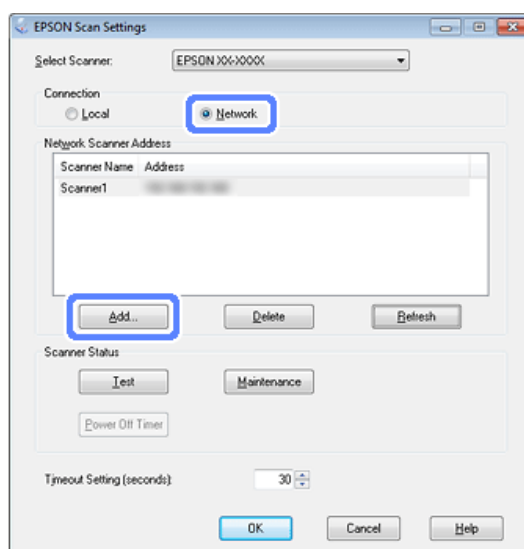
Click the start button, and then select **All Programs** or **Programs > EPSON > EPSON Scan > EPSON Scan Settings**

Mac OS X:

Select **Go > Applications > EPSON Software > EPSON Scan Settings**

3 Select your scanner from the **Select Scanner** drop-down list.

4 Select **Network**, then click **Add**.



5 In the Add window, choose the Network Interface Panel's IP address under Search for addresses, or select **Enter address** and type in the address. Then click **OK**.

6 In the EPSON Scan Settings window, click **Test** to check the connection. If everything works properly, you see a successful connection message appears.

7 Click **OK** to save the settings.

Configuring Epson Scan 2

1 Obtain the IP address or host name of the Network Interface Panel from your network administrator.

2 Start Epson Scan 2 Utility.

Windows 10:

Click the start button, and then select **All apps > EPSON > Epson Scan 2 Utility**

Windows 8.1/Windows 8:

Enter the application name in the search charm, and then select the displayed icon.

Scanning an Image

Windows 7/Windows Vista/Windows XP:

Click the start button, and then select **All Programs** or **Programs** > **EPSON** > **Epson Scan 2** > **Epson Scan 2 Utility**

Mac OS X:

Select **Go** > **Applications** > **EPSON Software** > **Epson Scan 2 Utility**

- 3 Select **Settings** from the **Scanner** drop-down list on the Epson Scan 2 Utility screen.

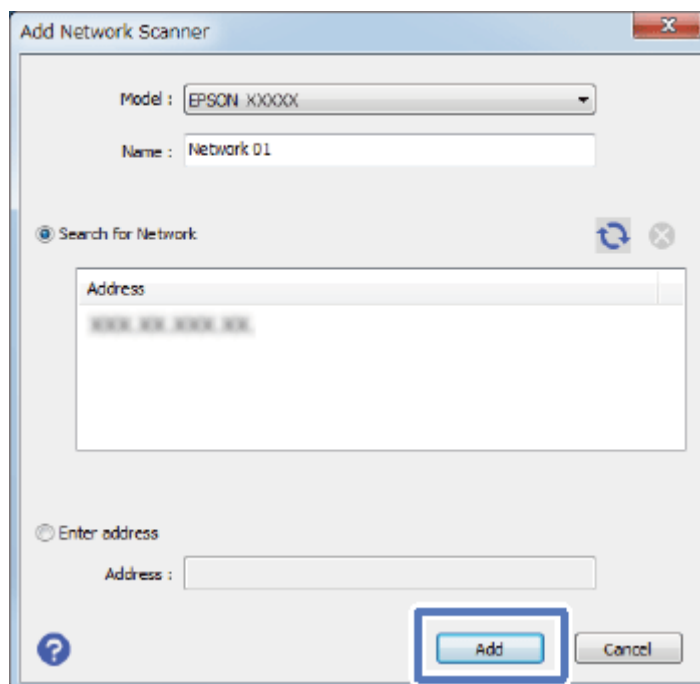
If Epson Scan 2 Utility screen is not displayed and **Scanner Settings** screen is displayed, go to the next step.

- 4 In the **Scanner Settings** screen, click **Add**.

If the **Add** button is disabled, click **Enable Editing** (Windows) or + button (Mac OS X), and then click **Add** button.

- 5 In the **Add Network Scanner** screen, select your scanner from the **Model** drop-down list.

- 6 Choose the Network Interface Panel's IP address under **Search for Network**, or select **Enter address** and type in the address. Then click **Add**.



- 7 In the **Scanner Settings** screen, select your scanner, and then click **OK**.

Scanning Over a Network


Note:

You must set the IP address for your Network Interface Panel before you can scan using it.

Scanning an Image


Note for Windows:

You need to install the latest Document Capture Pro before scanning. Go to the Epson home page to download the latest Document Capture Pro.


 <http://www.epson.com>

If the latest software is already installed on your computer, you do not need to update the software.

For Windows


- 1 Turn on your scanner and the client computer.
- 2 Place your original(s) on the document glass or in the Automatic Document Feeder (ADF).
- 3 Start Document Capture Pro.
 See the user's guide of the scanner for more details.
- 4 Click **Scan** on the Document Capture Pro Main window.
- 5 Make necessary settings on Main Settings, and then click **Scan**.

For Mac OS X



- 1 Turn on your scanner and the client computer.
- 2 Place your original(s) on the document glass or in the Automatic Document Feeder (ADF).
- 3 Start Epson Scan.
 See the user's guide of the scanner for more details.
- 4 Select your desired mode.
- 5 In the Epson Scan window, make the appropriate settings.
- 6 Click **Scan**.

Scanning from the Panel

Set up a job in advance.

 See the user's guide of the scanner for more details.

Scanning an Image

- 1 Turn on your scanner and the client computer.
- 2 Place your original(s) on the document glass or in the Automatic Document Feeder (ADF).
- 3 Press the **OK** button on the panel.
The scanner searches for an available computer.
- 4 Select the computer you want to send the data to, and then press the **OK** button.
If a group is set for the scanner, you need to set the same group on the computer if you want to display it on the panel.
- 5 Enter the password.
If the password entry screen is not displayed, go to the next step.
 See the Document Capture Pro help for more details.
- 6 Select a job, and then press the **OK** button.
- 7 Check the settings, and then press the  start button on the scanner.

About the Control Panel

About the Control Panel

Menu List

Environment menu

Item	Description
Network	You can check network settings such as the MAC address and IP address.
Maintenance	You can check the number of scanned sheets. If the scanner being used has an Automatic Document Feeder installed, you can check or reset the number of scanned sheets for the Roller Assembly Kit, Pickup Roller, Separation Pad, and Separation Roller.

Display menu

Item	Description
Language	Specifies the language displayed on the LCD panel.
Brightness	Adjusts the brightness of the LCD panel. Use the ▲ and ▼ buttons to set the contrast between -2 (darker) and +2 (brighter).
Contrast	Adjusts the contrast of the LCD panel. Use the ▲ and ▼ buttons to set the contrast between -2 (lowest contrast) and +2 (highest contrast).
Restore settings	Select Yes and then press the OK button to return the settings in the Display menu to their default values.

Energy saving menu

Item	Description
Power Off Timer	Specifies the length of time before the scanner enters power off mode if no operations are made.
Sleep	Specifies the length of time before the scanner enters sleep mode if no operations are made.
Restore settings	Select Yes and then press the OK button to return the settings in the Energy saving menu to their default values.

Network menu

Note:

This is not displayed if a password is set for this panel in EpsonNet Config.

About the Control Panel

Item	Description
IPv4	Select whether the IP address is set automatically or manually. If Manual is selected, you can set the value for IP address, IP subnet mask, and IP default gateway.
Link Speed	Specifies the transmission speed of the network interface.
IPv6	Specifies the IPv6 setting.
Mode	Select the mode from Client or Server.
Group	Specifies the group number of the scanner.
Restore settings	Select Yes and then press the OK button to return the settings in the Network menu to their default values.

Timeout menu

Item	Description
Back to Home screen	Specifies the timeout setting when the control panel is in other screen than home screen. This setting is not applied when the control panel displays the some of the error message screens.
Restore Settings	Select Yes and then press the OK button to return the settings in the Timeout menu to their default values.

Restore settings menu

Select **Yes** and then press the OK button to return the settings for all menus to their default values.

Troubleshooting

Problems Indicated by Messages on the LCD Panel or Status Lights

You can check the status of the scanner and the Network Interface Panel from messages on the LCD panel and the status lights.

Clear the error according to the message displayed.

The following table explains the light patterns and the main statuses.

Ready Light	Error Light	Status
On	Off	Scanning can be performed.
Off	On	The scanner has not been recognized. A network related error has occurred. An error such as a paper jam has occurred in the scanner.
Off	Off	The scanner is in sleep mode. A job is being cancelled. The PC/server on the network has not been recognized.
Blink	Off	Scanning. Searching for or connecting to a network.
Blink	Blink	The firmware is being updated.

If the following messages are displayed, turn off the scanner and then turn it back on again. Also, check the network connection and settings.

If this does not correct the problem, see the scanner User's Guide or consult your dealer.

- ☐ Network error
- ☐ Network fatal error
- ☐ Scanner error
- ☐ No reply received

Problems and Solution

This section provides solutions to problems you may have.

Refer to the "Troubleshooting" section in the user's guide of the scanner if you have problems with the software. The online help also provides versatile tips and other information helpful for problem-solving.

Troubleshooting


If you cannot solve a problem after reading and following the information in this chapter, contact your dealer or a qualified customer support person for assistance.

The LCD screen is not displayed even when the scanner is on.

- ❑ Check that the Network Interface Panel is connected correctly.

 [“Connecting the Network Interface Panel to a Network” on page 8](#)

- ❑ Check that the supported scanner is connected to the Network Interface Panel.


 Refer to the Epson Web site for supported scanners.

The scanner does not scan.

- ❑ Check that the scanner is turned on.

 [“Connecting the Network Interface Panel to a Network” on page 8](#)

- ❑ Check that the scanner is compatible with the Network Interface Panel.

 See the user's guide of the scanner for more details.

- ❑ Check that the network cable is connected securely.

 [“Connecting the Network Interface Panel to a Network” on page 8](#)


- ❑ Turn off the scanner and make sure the Network Interface Panel is properly installed in your scanner and connected to the network.

 [“Connecting the Network Interface Panel to a Network” on page 8](#)


- ❑ Check that the network cable is working correctly by connecting it to other products.

 [“Connecting the Network Interface Panel to a Network” on page 8](#)


- ❑ Check that EPSON Scan Settings or Epson Scan 2 Utility have been set correctly.

 See the user's guide of the scanner for more details.


- ❑ Check that the scanning software has been installed correctly.

 See the help came with each software for more details.

- ❑ Check that the scanner used with the scanning software has been selected.


 See the help came with each software for more details.

- ❑ Check that Network Scanning Settings from Document Capture Pro/Epson Event Manager have been set correctly.

 See the help came with each software for more details.


Troubleshooting

- ❑ In Network Scanning Settings, check that the Group settings for Document Capture Pro are the same as the settings for Network Interface Panel.


 See the Document Capture Pro help for more details.

 [“Scanning from the Panel” on page 19](#)

- ❑ Check that Epson Event Manager (Document Capture Pro) is not being blocked by a Firewall.

 See the user's guide of the scanner for more details.

- ❑ Check that the IP address is set correctly.

 See the user's guide of the scanner for more details.

- ❑ Check that there are several network interface panel (scanner) on the network.

On your computer, recognise the scanner using MAC address of this product.

 [“Environment menu” on page 21](#)

Web-based EpsonNet Config cannot be started or be made settings.

- ❑ Check that IPv4 address is set to this product.

To start Web-based EpsonNet Config, set IP address first. You can set from this product control panel or from EpsonNet Config for Windows/Macintosh. You can check the current setting from the control panel menu.

 [“Menu List” on page 21](#)

Technical Specifications

Technical Specifications

System Requirements

Make sure your system meets the requirements in these sections before using it with your product.

For Windows

System	Microsoft Windows 10, Windows 8.1, Windows 8, Windows 7, Windows Vista, Windows XP Home Edition, Windows XP Professional Edition, Windows XP Professional x64 Edition
--------	---

For Mac OS X

System	Mac OS X v10.4.11, 10.5.x, 10.6.x, 10.7.x (OS X Lion), 10.8.x (OS X Mountain Lion), 10.9.x (OS X Mavericks), 10.10.x (OS X Yosemite), and 10.11.x (OS X El Capitan). Fast User Switching on Mac OS X is not supported.
--------	--

Note:

Scanner driver does not support the UNIX File System (UFS) for Mac OS X. You must install scanner driver on a disk or in a partition that does not use UFS.

Network Interface Panel Specifications

Note:

Specifications are subject to change without notice.

General

Product code	B12B808411 DSPNNW1
Display	LCD (Liquid Crystal Display)

Mechanical

Dimensions	Height: 68 mm (2.6 inches) Width: 161 mm (6.3 inches) Depth: 84 mm (3.3 inches)
------------	---

Technical Specifications

Weight	Approx. 300 g (About 0.66 lb)
--------	-------------------------------

Electrical

Power consumption	Operating: Maximum 7.5 W
Rated input voltage	DC 5 V
Input voltage	DC 4.75 to 5.25 V
Rated input current	1.5 A

Environmental

Temperature	Operating: 5 to 35 °C (41 to 95 °F) Storage: -25 to 60 °C (-13 to 140 °F)
Humidity	Operating: 10 to 85 % (without condensation) Storage: 10 to 90 % (without condensation)
Operating conditions	Ordinary office or home conditions. Avoid operating the product in direct sunlight, near a strong light source, or in extremely dusty conditions.

Interfaces

Scanner Interface	USB via dedicated scanner interface connector
Network Interface	10BASE-T/100BASE-TX/1000BASE-T

Standard and Approvals

U.S. model:

EMC	FCC Part 15 Subpart B Class B
-----	-------------------------------

European model:

EMC Directive 2004/108/EC	EN55022 Class B EN55024
---------------------------	----------------------------

European model (for Russian users):

Technical Specifications

Модель соответствует требованиям нормативных документов	ГОСТ Р МЭК 60950-1-2009 ГОСТ Р 51318.22-99 (кл. Б) ГОСТ Р 51318.24-99 ГОСТ Р 51317.3.2-2006 (Разд 6, 7) ГОСТ Р 51317.3.3-2008
---	---

Australian model:

EMC	AS/NZS CISPR22 Class B
-----	------------------------

ZICTA Type Approval for Users in Zambia:

See the following website to check the information for ZICTA Type Approval.

<https://support.epson.net/zicta/>